

## Sewing Pattern #9874807

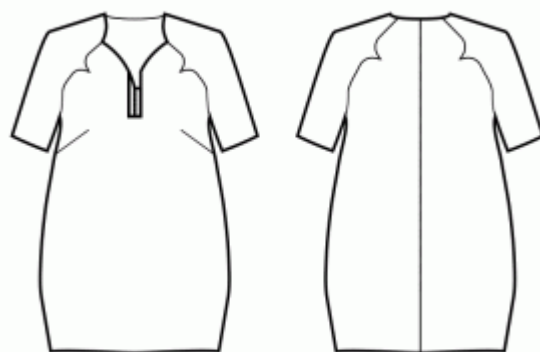
**Dress - Semi-fitted - Micro length - Raglan sleeves - Jewel heart neckline - No collar - Polo button placket - Shaped raglan - Cocoon Dress - Plain skirt - French darts - No darts on the back - 2-seam 1/4 length raglan sleeve**

### Note on seam allowances:

- If the pattern has double contour the seam allowances are included.
- If the pattern has single contour, the seam allowances are NOT included and need to be added when laying out the pattern.

### Note on length of fabric:

Attention! The amount of fabric needed for your pattern is not included. It will depend on the selected pattern size, the width, and design of the fabric you plan to use. You are welcome to use the Online Fabric Estimator to make calculations. Alternatively, print all the paper patterns and lay them out at the width of fabric you plan to use (usually from 90 to 150 cm). Measure how much fabric you will need. Don't forget to account for pieces that need to be cut multiple times and pieces that are cut on the fold.



## PRINTING:

Please use Adobe Reader software to open your PDF pattern. You can get Adobe Reader free of charge at this link - <https://get.adobe.com/reader/>.

Make sure you print your patterns at actual size (100%% scale or None) and on single sides of plain A4 paper. Verify that the print out size is to the correct scale by measuring the test square on the first page. The upper edge of the square features a centimeter scale, and the bottom edge features an inch scale.

Trim top and/or right margin of the pages where you see the scissors symbols. In the center of each page, the number of row and column is printed, separated by / sign. Construct layout pages according to these marks (for example, page marked 2/3 is in the second row and in the third column). Align pages using margins and tape or glue together.

## CUTTING:

### Note on cutting:

Lay out your pieces according to straight of grain as marked on the pattern pieces.

Some pieces will be cut on the fold, the corresponding edge will then be marked with a fold mark. Kindly pay attention to notes regarding type of fabric and quantity of required pieces on a block. For example, [ Main, Interfacing - cut 1+1 ] on a pattern piece means that you need to cut 1 piece as is and 1 mirrored piece from the main fabric as well as from interfacing.

Make sure to mark all notches and other design features such as pleats etc. from the pattern piece onto your fabric. When sewing the garment, pay attention to notches, they must match up.

\* The capital letters in brackets correspond to pattern blocks as seen in Online Fabric Estimator and in pattern blocks preview on the right.

## INSTRUCTIONS:

### 1. Recommended fabric for your sewing pattern:

- **Linen:** A breathable and lightweight fabric (weight: light to medium) that drapes beautifully, perfect for creating comfortable and semi-fitted garments.
- **Cotton Poplin:** A smooth and versatile fabric (weight: light to medium) with a slight crispness, ideal for semi-fitted dresses and tops with a classic look.
- **Rayon Challis:** Soft and drapey (weight: light), rayon challis offers a lovely flow for semi-fitted garments with a relaxed feel.
- **Cotton Lawn:** A lightweight and breathable fabric (weight: light) with a smooth surface, great for creating comfortable and semi-fitted summer dresses and tops.
- **Chambray:** Similar to denim but with a lighter weight (weight: light to medium), chambray provides a casual yet polished look for semi-fitted styles.
- **Light-weight Denim:** A versatile option (weight: light to medium) that adds a touch of casual elegance to semi-fitted dresses and tops, perfect for everyday wear.
- **Polyester Blends:** Woven fabrics with small to medium stretchiness and limited give (weight: light to medium), ideal for creating semi-fitted garments with a polished appearance.
- **Crepe:** With its subtle texture and drape (weight: light to medium), crepe is an excellent choice for semi-fitted garments with a touch of elegance.
- **Silk Habotai:** Soft and smooth (weight: light), silk habotai adds a luxurious feel to semi-fitted dresses and tops.
- **Tencel Twill:** Eco-friendly and breathable (weight: light to medium), Tencel twill is perfect for creating semi-fitted garments with a modern touch.
- **Cotton Sateen:** With a slight sheen and soft touch (weight: light to medium), cotton sateen works well for semi-fitted dresses and tops with a polished appearance.

Remember to consider the pattern's style elements and the ease allowance while selecting the fabric. These woven fabrics, including polyester blends and light-weight denim, will ensure comfortable and stylish semi-fitted garments for various occasions. Happy sewing!

### 2. Preparing the Fabric:

#### a. Prewash the Fabric:

- Before starting your sewing project, it's essential to prewash the fabric to remove any sizing or shrinkage.
- Follow the fabric's care instructions for washing and drying.
- b. Dry and Iron:**
  - After prewashing, dry the fabric according to the care instructions.
  - Once dry, iron the fabric to remove any wrinkles and ensure it's smooth and flat.
- c. Check Fabric Edges and Salvage Edge:**
  - Examine the edges of the fabric piece to ensure they are even and not cut in a slanted line.
  - If the fabric is cut at an angle, take this into account when calculating the yardage needed.
  - Do not include the salvage edge (the rough edge) into the calculations, as it may affect the look of the garment.
- d. Use the Online Yardage Tool at Sewist.com:**
  - Visit Sewist.com and use the [online yardage tool](#) to estimate the amount of fabric required for your sewing pattern.
  - Input the necessary measurements and details to get an accurate yardage estimate.
- e. Check Sewing Pattern Instructions:**
  - Review the sewing pattern instructions to determine the number of fabric pieces to cut and if any of them need to be cut on the fold.
  - Take note of any seam allowances on the edge of the fold line. If the seam allowance extends beyond the fold line, ignore it.
- f. Language Options:**
  - If you need the sewing pattern instructions in German, French, Spanish, Italian, or Russian, you can download them from the sewing pattern page at Sewist.com.
  - Simply go to the gallery, type in the design number, and proceed to the sewing pattern page.
- g. Choose Your Cutting Method:**
  1. (Option 1)
    - Print out the sewing pattern and tape the pages together to create the pattern pieces.
    - Place the sewing pattern pieces on the fabric and use weights to keep them from shifting.
    - Consider marking the outlines with a water-soluble or heat-erasable marker, transferring all marks and notches, and paying attention to the width of the seam allowances.
  2. (Option 2)
    - If you have an iPhone, you can use the augmented reality sewing pattern with the VectAR app.
    - Download the app and print out the marker page, then follow the manual at [Sewist.com - VectAR Manual](#) to use the AR sewing pattern.

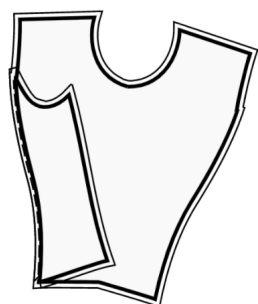
3. Cut a strap of fusible interfacing on bias, approximately 1.5 cm or 1/2 inch wide, and apply it to the neckline edges on the Front and on the Back, from the wrong side of the main fabric, to stabilise the edges (see the Figure on the right).



4. Sew darts on Front pieces. Start from the edge of the fabric, and stitch towards the dart corner, using a narrow stitch. Do not backstitch, leave long threads and tie a knot. Cut bulk off of 1 cm, if desired, and serge the raw edge. Press towards top.

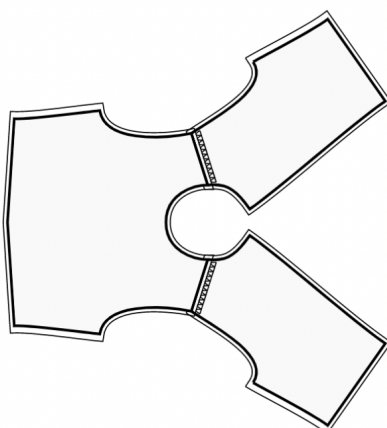
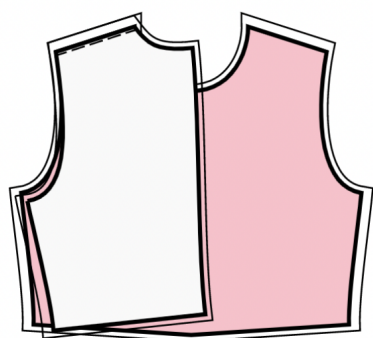
5. Sew Side Fronts to Center Front. Clip into the seam allowance along the curve. Serge the seams and press apart or towards the center. Treat as one piece (Front Bodice) in the future.

For example:



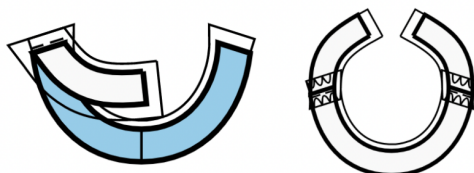
6. Sew shoulder and upper sleeve seams. Serge and press towards back.

7. Sew shoulder seams. Serge and press towards back.



## 8. NECKLINE FACING

- Sew shoulder seams of neckline facings. Press seam apart and serge.



- Serge outer edge of facings.

- Pin facing onto Shell right sides together, adjusting neckline edges. Fold the facing away all the way along EXCEPT for the area 5 mm from the edge of dress zipper (or center back edge if the back has an opening) and pin it to upper edge of garment. Fold seam allowances along zipper ((or center back edge) onto right side and pin to neckline on top of facings.

- Sew the neckline. Clip into curves, trim the corners, turn pieces right side out and press.

- Slipstitch facing to seam allowances of shoulder seam on Shell. Slipstitch facing to zipper tape, or the seam allowances along the center back edge, in case the back has an opening at the top.



## 9. Polo placket with buttons

Pin the plackets in half lengthwise and serge the longer edge and one shorter edge. Make buttonholes on one of the plackets according to the markings.

Pin the placket onto front, right sides together. The placket should be closer to center front than the marking on the front by the width of seam allowance. The bottom edge should be below the bottom line of the marking on the front by the width of seam allowance. Stitch from the top exactly up to the corner of the marking on the front.

Cut the opening on the front following the smaller inner rectangle. Slash diagonally into the bottom corners, stopping at 1 mm from the corner (do not cut the plackets).

Fold under the bottom seam allowance of the placket area on the front and press. Thread in the plackets, so that their ends are on the wrong side of the Front. Make sure that the placket with the buttonholes lies on top.

Baste the plackets together so that they don't shift. Sew a double fixing stitch at the bottom of the placket area, thus fixing the ends of the placket on the wrong side.

Optionally sew a decorative stitch line along the longer edge of the plackets.

Sew on buttons on the lower placket according to the upper placket.

## 10. Garment Assembly

1. Aligning Right Sides and Pinning: Carefully place the Back piece onto the Front piece, right sides together. Take your time to align the following elements for a proper fit: the armholes, the lower edge of the sleeve, the waist seam, and the hem of the garment. Once aligned, use pins to secure them in place. Pins will help keep everything in order.
2. Side Seam Stitching: Commence stitching from the armhole corner, sewing a straight line down to the hem

- 
- of the garment. This seam forms the side of your dress. Proceed deliberately, removing pins as you sew. Remember to begin and end your seam with a few backstitches to secure it.
3. Sleeve Seam Sewing: Transition to the sleeve section. Stitch a straight line from the armhole down to the lower edge of the sleeve. This creates the sleeve seam. Once again, take your time and remove pins as you progress. Ensure that you commence and conclude your seam with backstitches.
  4. Seam Finishing and Pressing: After completing the stitching, it's important to finish the raw edges of the fabric to prevent fraying. You can accomplish this using a serger or by employing a zigzag stitch on your sewing machine. Subsequently, press the seams towards the back of the garment or the back part of the sleeve.

## TECHNICAL DRAWING:

