

## Sewing Pattern #3097489

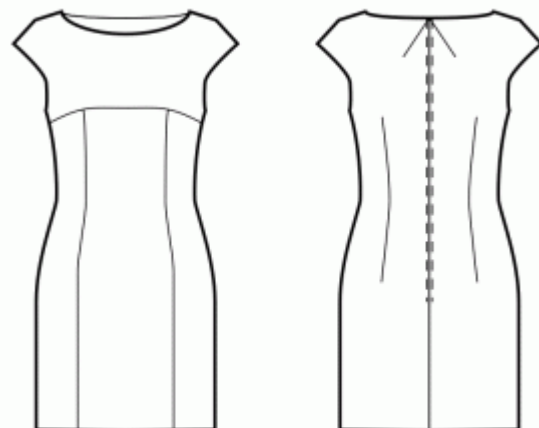
**Dress - Semi-fitted - Above knee length - 1-piece sleeves - 1-piece wing sleeves - Bateau neckline - No collar - No front closure - Dress without waist seam - No waist seam, straight skirt - Yoke across bust - Back center neck and waist dart**

### Note on seam allowances:

- If the pattern has double contour the seam allowances are included.
- If the pattern has single contour, the seam allowances are NOT included and need to be added when laying out the pattern.

### Note on length of fabric:

Attention! The amount of fabric needed for your pattern is not included. It will depend on the selected pattern size, the width, and design of the fabric you plan to use. You are welcome to use the Online Fabric Estimator to make calculations. Alternatively, print all the paper patterns and lay them out at the width of fabric you plan to use (usually from 90 to 150 cm). Measure how much fabric you will need. Don't forget to account for pieces that need to be cut multiple times and pieces that are cut on the fold.



### PRINTING:

Please use Adobe Reader software to open your PDF pattern. You can get Adobe Reader free of charge at this link - <https://get.adobe.com/reader/>.

Make sure you print your patterns at actual size (100%% scale or None) and on single sides of plain A4 paper. Verify that the print out size is to the correct scale by measuring the test square on the first page. The upper edge of the square features a centimeter scale, and the bottom edge features an inch scale.

Trim top and/or right margin of the pages where you see the scissors symbols. In the center of each page, the number of row and column is printed, separated by / sign. Construct layout pages according to these marks (for example, page marked 2/3 is in the second row and in the third column). Align pages using margins and tape or glue together.

### CUTTING:

#### Note on cutting:

Lay out your pieces according to straight of grain as marked on the pattern pieces.

Some pieces will be cut on the fold, the corresponding edge will then be marked with a fold mark. Kindly pay attention to notes regarding type of fabric and quantity of required pieces on a block. For example, [ Main, Interfacing - cut 1+1 ] on a pattern piece means that you need to cut 1 piece as is and 1 mirrored piece from the main fabric as well as from interfacing.

Make sure to mark all notches and other design features such as pleats etc. from the pattern piece onto your fabric. When sewing the garment, pay attention to notches, they must match up.

\* The capital letters in brackets correspond to pattern blocks as seen in Online Fabric Estimator and in pattern blocks preview on the right.

## INSTRUCTIONS:

### 1. Recommended fabric for your sewing pattern:

- **Linen:** A breathable and lightweight fabric (weight: light to medium) that drapes beautifully, perfect for creating comfortable and semi-fitted garments.
- **Cotton Poplin:** A smooth and versatile fabric (weight: light to medium) with a slight crispness, ideal for semi-fitted dresses and tops with a classic look.
- **Rayon Challis:** Soft and drapey (weight: light), rayon challis offers a lovely flow for semi-fitted garments with a relaxed feel.
- **Cotton Lawn:** A lightweight and breathable fabric (weight: light) with a smooth surface, great for creating comfortable and semi-fitted summer dresses and tops.
- **Chambray:** Similar to denim but with a lighter weight (weight: light to medium), chambray provides a casual yet polished look for semi-fitted styles.
- **Light-weight Denim:** A versatile option (weight: light to medium) that adds a touch of casual elegance to semi-fitted dresses and tops, perfect for everyday wear.
- **Polyester Blends:** Woven fabrics with small to medium stretchiness and limited give (weight: light to medium), ideal for creating semi-fitted garments with a polished appearance.
- **Crepe:** With its subtle texture and drape (weight: light to medium), crepe is an excellent choice for semi-fitted garments with a touch of elegance.
- **Silk Habotai:** Soft and smooth (weight: light), silk habotai adds a luxurious feel to semi-fitted dresses and tops.
- **Tencel Twill:** Eco-friendly and breathable (weight: light to medium), Tencel twill is perfect for creating semi-fitted garments with a modern touch.
- **Cotton Sateen:** With a slight sheen and soft touch (weight: light to medium), cotton sateen works well for semi-fitted dresses and tops with a polished appearance.

Remember to consider the pattern's style elements and the ease allowance while selecting the fabric. These woven fabrics, including polyester blends and light-weight denim, will ensure comfortable and stylish semi-fitted garments for various occasions. Happy sewing!

### 2. Zipper Length Note:

For patterns that are fitted in the waist, we recommend installing a zipper that goes below the waist level,

approximately halfway to the hips. This placement ensures easy dressing and a smooth fit for your garment. However, for patterns that are not fitted in the waist or have a wider neckline, clients have the freedom to make their design decisions. They can choose to install a shorter zipper at the top or even skip the zipper altogether if they prefer. We understand that sewing in a zipper can be a complex step, and we want to provide flexibility in the construction process.

To determine the zipper length, look for the triangular zipper mark along the back seam of the pattern. Measure from the top corner of the back piece to the marking, possibly across several pieces if the zipper spans multiple sections. Generally, if a zipper of a similar length, or slightly shorter, is available, it should work well for your garment.

For the exact zipper length as specified in the pattern, please refer to the specification sheet.

### 3. Preparing the Fabric:

#### a. Prewash the Fabric:

- Before starting your sewing project, it's essential to prewash the fabric to remove any sizing or shrinkage.
- Follow the fabric's care instructions for washing and drying.

#### b. Dry and Iron:

- After prewashing, dry the fabric according to the care instructions.
- Once dry, iron the fabric to remove any wrinkles and ensure it's smooth and flat.

#### c. Check Fabric Edges and Salvage Edge:

- Examine the edges of the fabric piece to ensure they are even and not cut in a slanted line.
- If the fabric is cut at an angle, take this into account when calculating the yardage needed.
- Do not include the salvage edge (the rough edge) into the calculations, as it may affect the look of the garment.

#### d. Use the Online Yardage Tool at Sewist.com:

- Visit Sewist.com and use the [online yardage tool](#) to estimate the amount of fabric required for your sewing pattern.
- Input the necessary measurements and details to get an accurate yardage estimate.

#### e. Check Sewing Pattern Instructions:

- Review the sewing pattern instructions to determine the number of fabric pieces to cut and if any of them need to be cut on the fold.
- Take note of any seam allowances on the edge of the fold line. If the seam allowance extends beyond the fold line, ignore it.

#### f. Language Options:

- If you need the sewing pattern instructions in German, French, Spanish, Italian, or Russian, you can download them from the sewing pattern page at Sewist.com.
- Simply go to the gallery, type in the design number, and proceed to the sewing pattern page.

#### g. Choose Your Cutting Method:

##### 1. (Option 1)

- Print out the sewing pattern and tape the pages together to create the pattern pieces.
- Place the sewing pattern pieces on the fabric and use weights to keep them from shifting.
- Consider marking the outlines with a water-soluble or heat-erasable marker, transferring all marks and notches, and paying attention to the width of the seam allowances.

##### 2. (Option 2)

- If you have an iPhone, you can use the augmented reality sewing pattern with the VectAR app.
- Download the app and print out the marker page, then follow the manual at [Sewist.com - VectAR](#)

[Manual](#) to use the AR sewing pattern.

4. Cut a strap of fusible interfacing on bias, approximately 1.5 cm or 1/2 inch wide, and apply it to the neckline edges on the Front and on the Back, from the wrong side of the main fabric, to stabilise the edges (see the Figure on the right).



## 5. FUSIBLE INTERFACING

### Applying Fusible Interfacing:

- Follow the Cutting instructions to determine the size and shape of the fusible interfacing needed.
- Prepare your work area by laying out the main fabric on the ironing board, with the wrong side facing up.
- Take the fusible interfacing and place it on top of the fabric, ensuring the adhesive side faces down.
- To protect the fabric, position a pressing cloth over the interfacing.
- Apply the fusible interfacing in manageable stages, focusing on one area at a time.
- With the iron held over the fabric, maintain a steady position for approximately 10 seconds.
- Keep the iron still during this time to prevent any movement of the fabric layers.
- Lift the iron and move on to the next area, repeating the process until all sections are covered.
- Allow the fused interfacing to cool down a bit before proceeding to the next step.

### Applying Fusible Interfacing to Shoulder Edges:

- Cut a strap of fusible interfacing on bias, approximately 1.5 cm or 1/2 inch wide.
- From the wrong side of the main fabric, place the interfacing strip along the shoulder edges of the Front and Back pieces.
- This step helps stabilize and reinforce the edges, ensuring durability and shape retention.
- Refer to the *Figure on the right* for visual guidance.



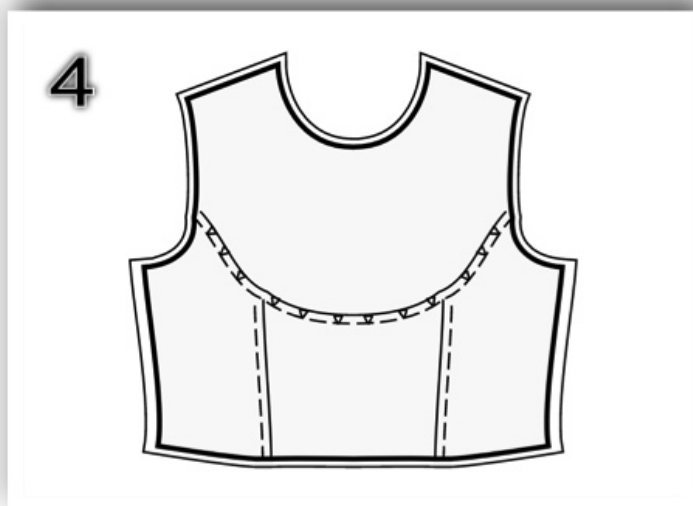
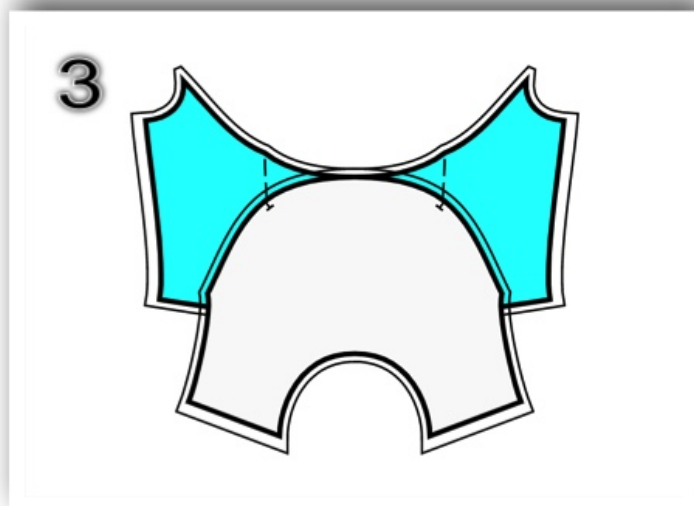
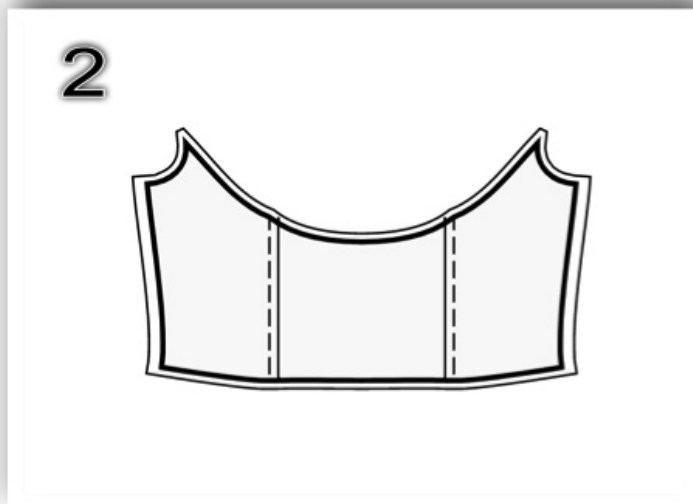
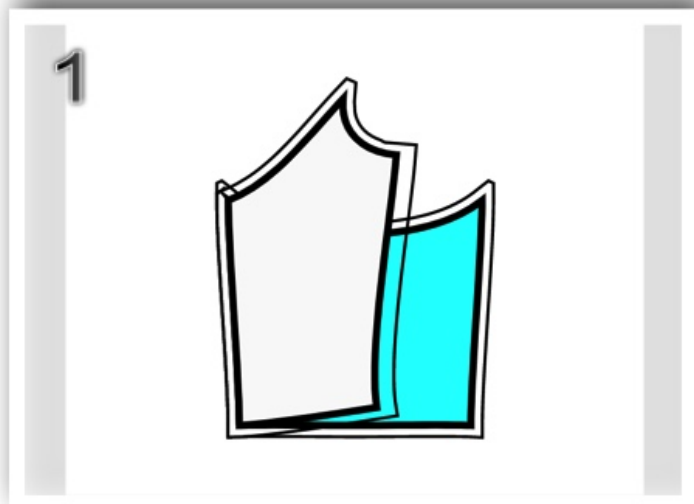
## 6. DEEP YOKE WITH PRINCESS SEAMS

*The instructions below are given for a Front without center seam, or button placket.*

*In case your design does have a placket, the center pieces of the Front may be cut in two. In this case, sew the seams on the both halves of the Front correspondingly.*

- Pin Lower Side Front onto Center Side Front and sew. Treat as a whole Lower Front in the future. (See Figure 1)
- Serge and press towards center. (See Figure 2)
- Pin Upper Front onto Lower Front, matching the notches with the seams between the Lower Side and Center Front. You may want to baste the pieces together. Sew along the edge. (See Figure 3)

- Clip into curves, press towards top and serge (See Figure 4)



7. Sew waist darts on Back pieces if these are present on your sewing pattern. Start from the edge of the fabric, and stitch towards the dart corner, using a narrow stitch. Do not backstitch, leave long threads and tie a knot. Press bulk of darts towards center back (see Figure in the right).



8. Serge the central back edges separately.

## 9. CENTER BACK ZIPPER

- Fold under the seam allowances along the center back seam. Push them down with your hand, but do not press them.

- Open the dress zipper. Put it down onto the center back edge, right sides together. The teeth of the zipper should be matched with the center back of the garment. The edge of the zipper tape is directed towards the edge of the seam allowance.

- Line up the upper end of the zipper 1mm lower than the marked stitch line of the neckline edge (not the edge of the seam allowance of the neckline) and baste the zipper tape to the seam allowance of center back. Do not baste through both layers of the main fabric, but to the seam allowance only. It is best to baste with slanted stitches at the center of the zipper tape. Baste both the left and the right sides of the zipper, from the upper edge downwards.

- Install the invisible zipper foot.

- Push down the teeth of the left side of the zipper with the nail of your index finger, and thread them into the special groove of the zipper foot. Make sure to uncurl the spiral of the zipper with your nail a bit, so that you can see the future stitch line. Adjust the position of the needle and stitch the zipper close to teeth. Make sure that the stitch line is exactly at the center back line. Stop at 2 cm from the slider. Leave long ends, pull them to the wrong side, tie a knot and cut thread. (See Figure 1)

- Repeat for the right side of the zipper. Start stitching at the top and proceed downwards toward the hem. You may need to readjust the position of the needle depending on your zipper foot. (See Figure 2)

- Close the zipper.

- Baste the center back seam, folding away the lower end of the zipper, so that you can baste it up to the stitch line of the zipper.

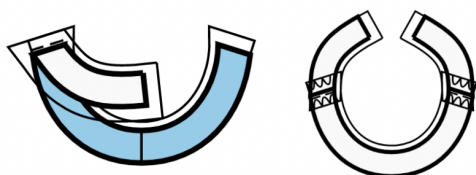
- Install the zipper foot. Sew the center back seam from the lower edge (or the vent upper corner, if there's a vent) and stitch as closely as you can to the end of the zipper.

- Remove baste stitches. Slipstitch the base of the opening for zipper. Press the seam apart, pressing the opening for the zipper at the same time.



## 10. NECKLINE FACING

- Sew shoulder seams of neckline facings. Press seam apart and serge.





- Serge outer edge of facings.

- Pin facing onto Shell right sides together, adjusting neckline edges. Fold the facing away all the way along EXCEPT for the area 5 mm from the edge of dress zipper (or center back edge if the back has an opening) and pin it to upper edge of garment. Fold seam allowances along zipper ((or center back edge) onto right side and pin to neckline on top of facings.

- Sew the neckline. Clip into curves, trim the corners, turn pieces right side out and press.

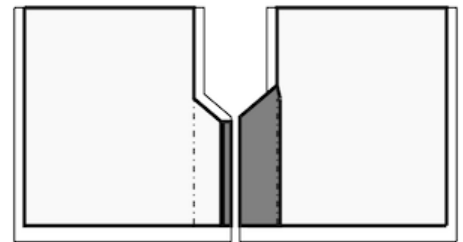
- Slipstitch facing to seam allowances of shoulder seam on Shell. Slipstitch facing to zipper tape, or the seam allowances along the center back edge, in case the back has an opening at the top.



## 11. VENT

*IMPORTANT: Depending on the length of the skirt and the silhouette your garment may or may not have vent. Skip this step if there is no vent on back skirt.*

- Cut a tape from fusible interfacing, 5/8 inch wide, along the grain, and apply it to the seam allowance of the right skirt from the wrong side, leaving a distance of 0.1 cm between the line marking the seam allowance of the vent and the fusible interfacing (see Figure 1).



- Cut a shape of the vent area with the seam allowances, wider by 0.5 cm. Apply the piece to the area of the vent on the left skirt, from the wrong side. The fusible interfacing should pass the fold line of the vent by 0.5 cm (see Figure 1).



- Mark center seam line (vent fold-line) from the right side.

- Serge the vertical and the upper slanted edges of the vents separately on both skirts.

- Fold under the seam allowance along the vertical edge of the vent on the right skirt, and topstitch it, stopping at approximately 6 cm from the lower edge. (See Figure 2).

- Pin right skirt to left skirt, right sides together, align the center back seams, and the vent edges. Baste together along the upper edge of the vent.

- Sew the center back seam, then 1/2 inch down, and turn and stitch along the slanted vent edge, all the way up to the vertical edge of the vent on the left skirt. (See Figure 3).

- Clip into the corner of seam allowance between the center back seam and the slanted upper edge of the vent on the right skirt.

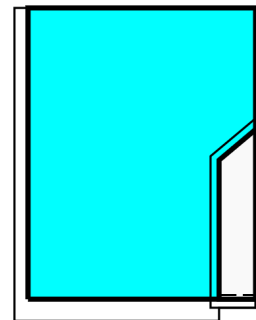
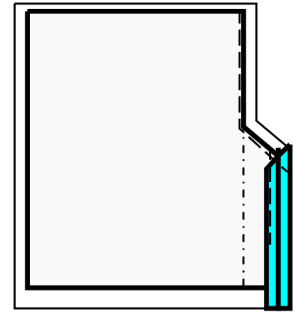
- Press the center back seam apart.

- Press the seam allowance for the vent on the left skirt in such a way, that the fold of the vent continues the center back seam.

- On the left skirt, sew a stitch line from the fold of the vent to the vertical edge of the seam allowance of the vent, along the hem line. Cut away the seam allowance, leaving 1 cm (3/4 inches). Trim the corner. Turn right side out and press. (See Figure 4)

- Baste together the layers of the vent along the slanted edge and the vertical edge of the inner part of the vent.

- Sew a fixing stitch from the right side, from the center back seam along the slanted edge of the vent (see the technical drawing).



## 12. SEW THE SIDE SEAMS

1. **Pin Front to Back:** Place the front piece over the back piece, ensuring that the right sides of the fabric are facing each other.
2. **Match Marks and Edges:** Align the waist marks or seams, the armholes, and the lower edges of the pieces.
3. **Sew Side Seams:** Stitch along the sides to create the seams.
4. **Finish Edges:** After sewing, use a serger to finish the edges of the fabric.
5. **Press Towards Back:** Press the finished seams towards the back of the garment to give it a neat appearance.

13. Sew shoulder (if not yet sewn) and side seams of armhole facings. Press seam apart and serge. Serge outer edge of facings. Pin facing onto Shell right sides together, adjusting armhole edges and matching markings. Sew the armhole in two steps - first one front, and then the back. Clip into curves, turn pieces right side out and press. Topstitch seam allowances onto facing.

## 14. HEM FINISHING

- a. **Serge Hem** Using a serger or overlock machine, serge the raw edge of the hem to prevent fraying.
- b. **Turn Under and Press:** Turn the serged edge of the hem towards the wrong side of the fabric. Press the folded hem in place with an iron to create a crisp edge.
- c. **Topstitch or Slip Stitch:** Choose your desired finishing method:
  - **Topstitch:** Sew a straight stitch along the folded edge of the hem, securing it in place.
  - **Slip Stitch:** Use a hand sewing needle and matching thread to invisibly stitch the folded hem to the main



fabric.

# **TECHNICAL DRAWING:**

