

Sewing Pattern #4230926

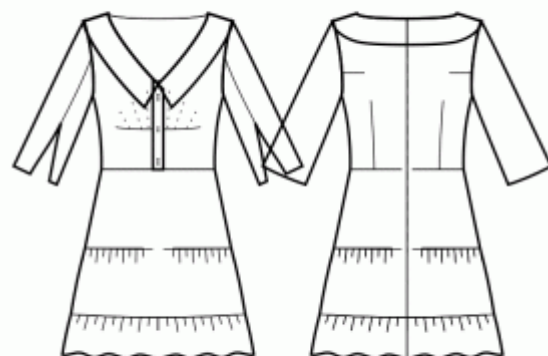
Dress - Semi-fitted - Above knee length - Regular armholes - Wide plunging neckline - Wide Peter Pan collar with straight corners - Button closure neck to waist - Dress with skirt with yoke - Straight yoke at hip - 2-tiered skirt - Sewist ♥ front: T-dart with gathers - Back armhole and waist darts - 3/4 Sleeve with petal slit

Note on seam allowances:

- If the pattern has double contour the seam allowances are included.
- If the pattern has single contour, the seam allowances are NOT included and need to be added when laying out the pattern.

Note on length of fabric:

Attention! The amount of fabric needed for your pattern is not included. It will depend on the selected pattern size, the width, and design of the fabric you plan to use. You are welcome to use the Online Fabric Estimator to make calculations. Alternatively, print all the paper patterns and lay them out at the width of fabric you plan to use (usually from 90 to 150 cm). Measure how much fabric you will need. Don't forget to account for pieces that need to be cut multiple times and pieces that are cut on the fold.



PRINTING:

Please use Adobe Reader software to open your PDF pattern. You can get Adobe Reader free of charge at this link - <https://get.adobe.com/reader/>.

Make sure you print your patterns at actual size (100%% scale or None) and on single sides of plain A4 paper. Verify that the print out size is to the correct scale by measuring the test square on the first page. The upper edge of the square features a centimeter scale, and the bottom edge features an inch scale.

Trim top and/or right margin of the pages where you see the scissors symbols. In the center of each page, the number of row and column is printed, separated by / sign. Construct layout pages according to these marks (for example, page marked 2/3 is in the second row and in the third column). Align pages using margins and tape or glue together.

CUTTING:

Note on cutting:

Lay out your pieces according to straight of grain as marked on the pattern pieces.

Some pieces will be cut on the fold, the corresponding edge will then be marked with a fold mark. Kindly pay attention to notes regarding type of fabric and quantity of required pieces on a block. For example, [Main, Interfacing - cut 1+1] on a pattern piece means that you need to cut 1 piece as is and 1 mirrored piece from the main fabric as well as from interfacing.

Make sure to mark all notches and other design features such as pleats etc. from the pattern piece onto your fabric. When sewing the garment, pay attention to notches, they must match up.

* The capital letters in brackets correspond to pattern blocks as seen in Online Fabric Estimator and in pattern blocks preview on the right.

INSTRUCTIONS:

1. Apply fusible interfacing according to the Cutting instructions. Lay out your main fabric on the ironing board with the wrong side of the fabric up. Place the interfacing on top with the adhesive facing down. Place a pressing cloth over the top. Apply fusible interfacing in stages, covering a certain area at a time. Hold the iron over the fabric for about 10 seconds. Keep the iron still so that the fabric layers don't move around. Lift the iron and proceed to the next area. Leave it to cool a little before moving onto the next stage.

Cut a strap of fusible interfacing on bias, approximately 1.5 cm or 1/2 inch wide, and apply it to the shoulder edges on the Front and on the Back, from the wrong side of the main fabric, to stabilise the edges (see the Figure on the right).



2. Sew darts on Back pieces. Press bulk of armhole darts towards top.

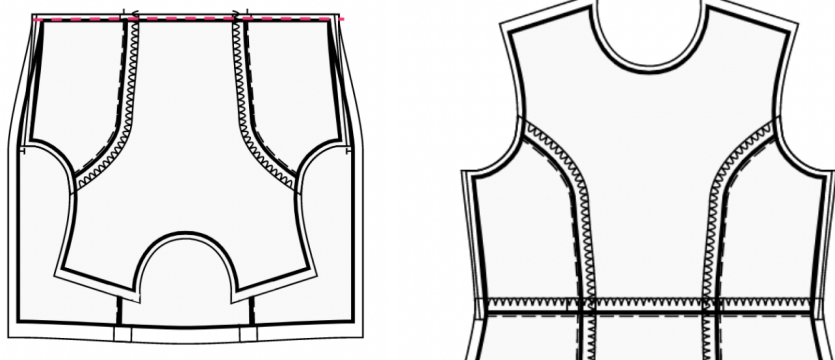
3. - Sew a gathering stitch along the upper edge of the Lower Front Skirt and gather fullness. The desired length is mentioned on the top of the pattern block.

- Sew Lower Front Skirt to Upper Front Skirt, serge and press towards top.
Treat as one piece (Front Skirt) in the future.

4. - Sew a gathering stitch along the upper edge of the Lower Back Skirts and gather fullness. The desired length is mentioned on the top of the pattern block.

- Sew Lower Back Skirts to Upper Back Skirts, serge and press towards top.
Treat as one piece (Back Skirts) in the future.

5. Place the Front Bodice and Front Skirt together with right sides together, matching the side seams. Pin the bodice to the skirt, matching the center front lines. The darts/notches should line up. Consider basting the seam first to be sure the seams match up perfectly and to prevent any shifting of fabric when stitching. Stitch together. Serge the seam allowances, and press them towards top. Treat as one Front piece in the future.
For example:



6. Place the right Back Bodice and right Back Skirt together with right sides together, matching the side seams. Pin the bodice to the skirt, matching the darts/notches. Consider basting the seam first to be sure the seams match up perfectly and to prevent any shifting of fabric when stitching. Stitch together. Serge the seam allowances, and press them towards top. Repeat for the left Back Bodice and Left Back Skirt. Treat as whole Back pieces in the future.

7. BUTTON PLACKET

- Sew longer edge of button placket to center front. Press towards placket.
- Fold placket in half, right sides together, and sew upper corner. Trim corners, clip into corners. Turn the placket right side out, straighten the corner, and press.
- Turn under seam allowance along inner edge of button placket, pin to the seam between placket and front, and stitch in the ditch from the right side.
- Repeat for the other side.
- Make buttonholes on right placket, sew on buttons on left placket according to the markings.
- Baste center fronts together along lower edge of the placket and treat as one piece, Upper Front, in the future.

8. Pin collars pairwise right sides together and sew outer edge and corners. Trim seams, turn collar right side out and press.

Sew outer collar stand into front neckline, clip into curves and press seam towards collar. Turn inner collar edge under and topstitch into neckline connecting seam.

9. Serge hem, turn under, press and topstitch or slip stitch as desired.

TECHNICAL DRAWING:

