

Sewing Pattern #4214707

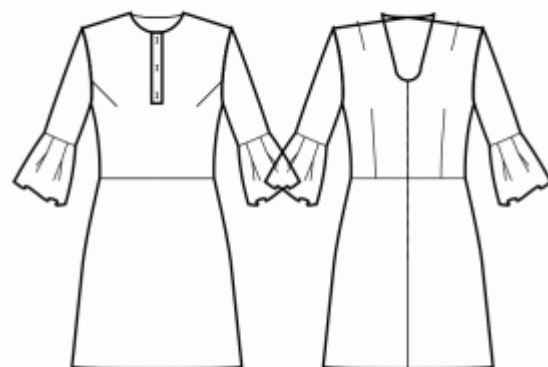
Dress - Semi-fitted - Above knee length - Regular armholes - Tight neckline - No collar - Polo button placket - Dress with waist seam - Waist seam, A-line skirt - All front darts transferred to armhole - Back design: Sewist ♥ exclusive - Back teardrop neckline - Sleeve with folded cuff

Note on seam allowances:

- If the pattern has double contour the seam allowances are included.
- If the pattern has single contour, the seam allowances are NOT included and need to be added when laying out the pattern.

Note on length of fabric:

Attention! The amount of fabric needed for your pattern is not included. It will depend on the selected pattern size, the width, and design of the fabric you plan to use. You are welcome to use the Online Fabric Estimator to make calculations. Alternatively, print all the paper patterns and lay them out at the width of fabric you plan to use (usually from 90 to 150 cm). Measure how much fabric you will need. Don't forget to account for pieces that need to be cut multiple times and pieces that are cut on the fold.



PRINTING:

Please use Adobe Reader software to open your PDF pattern. You can get Adobe Reader free of charge at this link - <https://get.adobe.com/reader/>.

Make sure you print your patterns at actual size (100%% scale or None) and on single sides of plain A4 paper. Verify that the print out size is to the correct scale by measuring the test square on the first page. The upper edge of the square features a centimeter scale, and the bottom edge features an inch scale.

Trim top and/or right margin of the pages where you see the scissors symbols. In the center of each page, the number of row and column is printed, separated by / sign. Construct layout pages according to these marks (for example, page marked 2/3 is in the second row and in the third column). Align pages using margins and tape or glue together.

CUTTING:

Note on cutting:

Lay out your pieces according to straight of grain as marked on the pattern pieces.

Some pieces will be cut on the fold, the corresponding edge will then be marked with a fold mark. Kindly pay attention to notes regarding type of fabric and quantity of required pieces on a block. For example, [Main, Interfacing - cut 1+1] on a pattern piece means that you need to cut 1 piece as is and 1 mirrored piece from the main fabric as well as from interfacing.

Make sure to mark all notches and other design features such as pleats etc. from the pattern piece onto your fabric. When sewing the garment, pay attention to notches, they must match up.

* The capital letters in brackets correspond to pattern blocks as seen in Online Fabric Estimator and in pattern blocks preview on the right.

INSTRUCTIONS:

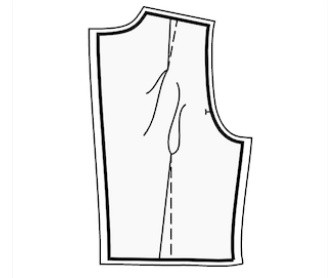
1. Apply fusible interfacing according to the Cutting instructions. Lay out your main fabric on the ironing board with the wrong side of the fabric up. Place the interfacing on top with the adhesive facing down. Place a pressing cloth over the top. Apply fusible interfacing in stages, covering a certain area at a time. Hold the iron over the fabric for about 10 seconds. Keep the iron still so that the fabric layers don't move around. Lift the iron and proceed to the next area. Leave it to cool a little before moving onto the next stage.

Cut a strap of fusible interfacing on bias, approximately 1.5 cm or 1/2 inch wide, and apply it to the shoulder edges on the Front and on the Back, from the wrong side of the main fabric, to stabilise the edges (see the Figure on the right).



2. Sew darts on Front pieces. Start from the edge of the fabric, and stitch towards the dart corner, using a narrow stitch. Do not backstitch, leave long threads and tie a knot. Cut bulk off of 1 cm, if desired, and serge the raw edge. Press towards top.

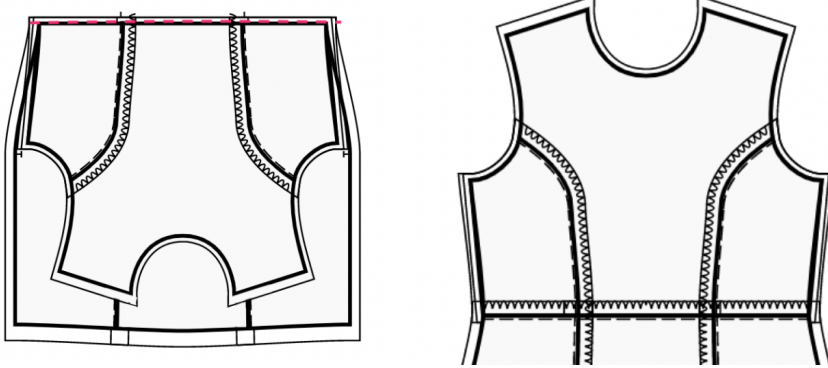
3. Sew darts on Back pieces. Start from the edge of the fabric, and stitch towards the dart corner, using a narrow stitch. Do not backstitch, leave long threads and tie a knot. Press bulk of darts towards center back (see Figure in the right).



4. Serge slanted edge of Upper Back, fold under and topstitch. Pin Upper back to Lower back from armhole edge to mark, and sew. Start and stop stitching exactly at the notch. Serge, press towards bottom. Topstitch at 0.5 cm from the seam. Sew a hook and eye to the corners of the back neckline.

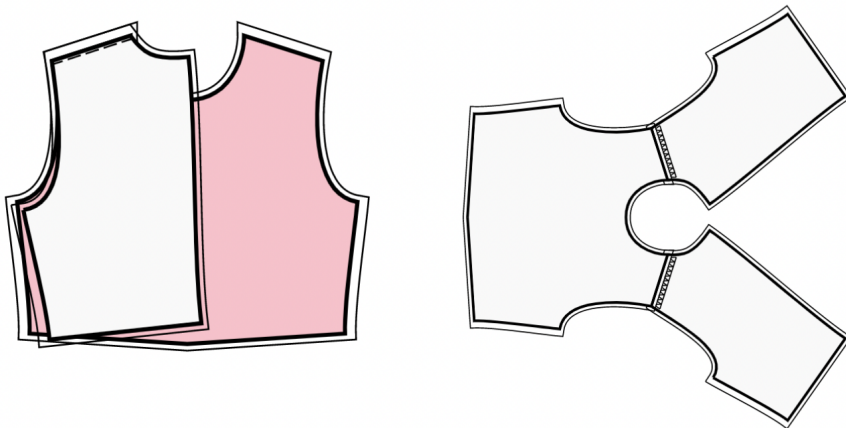
5. Place the Front Bodice and Front Skirt together with right sides together, matching the side seams. Pin the

bodice to the skirt, matching the center front lines. The darts/notches should line up. Consider basting the seam first to be sure the seams match up perfectly and to prevent any shifting of fabric when stitching. Stitch together. Serge the seam allowances, and press them towards top. Treat as one Front piece in the future. For example:



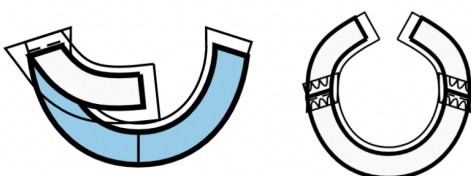
6. Place the right Back Bodice and right Back Skirt together with right sides together, matching the side seams. Pin the bodice to the skirt, matching the darts/notches. Consider basting the seam first to be sure the seams match up perfectly and to prevent any shifting of fabric when stitching. Stitch together. Serge the seam allowances, and press them towards top. Repeat for the left Back Bodice and Left Back Skirt. Treat as whole Back pieces in the future.

7. Sew shoulder seams. Serge and press towards back.

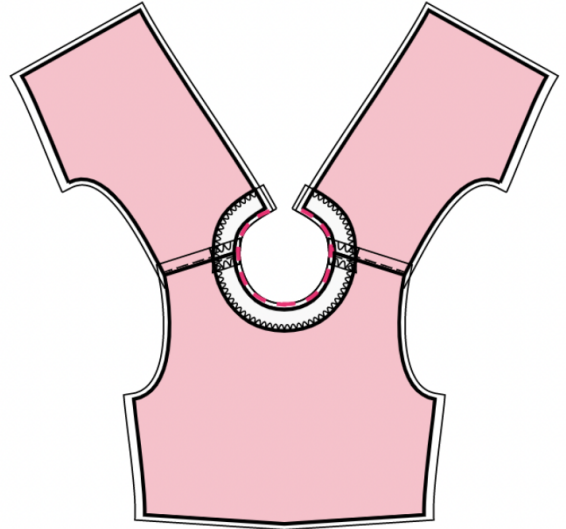


8. NECKLINE FACING

- Sew shoulder seams of neckline facings. Press seam apart and serge.



- Serge outer edge of facings.
- Pin facing onto Shell right sides together, adjusting neckline edges. Fold the facing away all the way along EXCEPT for the area 5 mm from the edge of dress zipper (or center back edge if the back has an opening) and pin it to upper edge of garment. Fold seam allowances along zipper ((or center back edge) onto right side and pin to neckline on top of facings.
- Sew the neckline. Clip into curves, trim the corners, turn pieces right side out and press.
- Slipstitch facing to seam allowances of shoulder seam on Shell. Slipstitch facing to zipper tape, or the seam allowances along the center back edge, in case the back has an opening at the top.



9. BUTTON PLACKET

- Pin the longer edge of button placket to the center front edge, right sides together, and sew. Press towards placket.
- Fold placket in half, right sides together, and sew upper corner. Trim corners, clip into corners. Turn the placket right side out, straighten the corner, and press.
- Repeat for the other side.

10. Make and baste pleats on cuff. Press. Pin cuff onto sleeve, right sides together, and sew. Serge and press towards cuff. Fold seam allowance along the other edge of the cuff under and pin it to the cuff seam from the wrong side. Stitch in the ditch from the right side.

Sew sleeves into armholes matching notches and gathering ease on cap. Serge and press towards sleeve.

Sew sleeve seams and continue to sew side seams. Serge and press towards back.

11. Serge hem, turn under, press and topstitch or slip stitch as desired.

TECHNICAL DRAWING:

