

Sewing Pattern #3742822

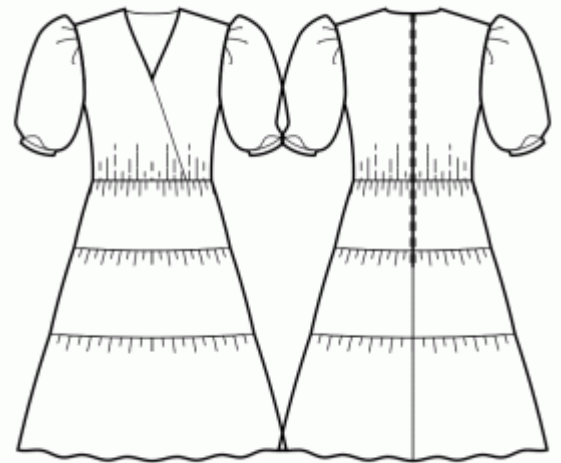
Dress - Semi-fitted - Midi length - Regular V wrap - No collar - No front closure - Dress with waist seam - 3-Tiered skirt - Sewist ♥ front: gathers along waist - Back design: Sewist ♥ exclusive - Sewist ♥ back: gathers along waist - Gathered 1/2 sleeve

Note on seam allowances:

- If the pattern has double contour the seam allowances are included.
- If the pattern has single contour, the seam allowances are NOT included and need to be added when laying out the pattern.

Note on length of fabric:

Attention! The amount of fabric needed for your pattern is not included. It will depend on the selected pattern size, the width, and design of the fabric you plan to use. You are welcome to use the Online Fabric Estimator to make calculations. Alternatively, print all the paper patterns and lay them out at the width of fabric you plan to use (usually from 90 to 150 cm). Measure how much fabric you will need. Don't forget to account for pieces that need to be cut multiple times and pieces that are cut on the fold.



PRINTING:

Please use Adobe Reader software to open your PDF pattern. You can get Adobe Reader free of charge at this link - <https://get.adobe.com/reader/>.

Make sure you print your patterns at actual size (100%% scale or None) and on single sides of plain A4 paper. Verify that the print out size is to the correct scale by measuring the test square on the first page. The upper edge of the square features a centimeter scale, and the bottom edge features an inch scale.

Trim top and/or right margin of the pages where you see the scissors symbols. In the center of each page, the number of row and column is printed, separated by / sign. Construct layout pages according to these marks (for example, page marked 2/3 is in the second row and in the third column). Align pages using margins and tape or glue together.

CUTTING:

Note on cutting:

Lay out your pieces according to straight of grain as marked on the pattern pieces.

Some pieces will be cut on the fold, the corresponding edge will then be marked with a fold mark. Kindly pay attention to notes regarding type of fabric and quantity of required pieces on a block. For example, [Main, Interfacing - cut 1+1] on a pattern piece means that you need to cut 1 piece as is and 1 mirrored piece from the main fabric as well as from interfacing.

Make sure to mark all notches and other design features such as pleats etc. from the pattern piece onto your fabric. When sewing the garment, pay attention to notches, they must match up.

* The capital letters in brackets correspond to pattern blocks as seen in Online Fabric Estimator and in pattern blocks preview on the right.

INSTRUCTIONS:

1. Recommended fabric for your sewing pattern:

- **Linen:** A breathable and lightweight fabric (weight: light to medium) that drapes beautifully, perfect for creating comfortable and semi-fitted garments.
- **Cotton Poplin:** A smooth and versatile fabric (weight: light to medium) with a slight crispness, ideal for semi-fitted dresses and tops with a classic look.
- **Rayon Challis:** Soft and drapey (weight: light), rayon challis offers a lovely flow for semi-fitted garments with a relaxed feel.
- **Cotton Lawn:** A lightweight and breathable fabric (weight: light) with a smooth surface, great for creating comfortable and semi-fitted summer dresses and tops.
- **Chambray:** Similar to denim but with a lighter weight (weight: light to medium), chambray provides a casual yet polished look for semi-fitted styles.
- **Light-weight Denim:** A versatile option (weight: light to medium) that adds a touch of casual elegance to semi-fitted dresses and tops, perfect for everyday wear.
- **Polyester Blends:** Woven fabrics with small to medium stretchiness and limited give (weight: light to medium), ideal for creating semi-fitted garments with a polished appearance.
- **Crepe:** With its subtle texture and drape (weight: light to medium), crepe is an excellent choice for semi-fitted garments with a touch of elegance.
- **Silk Habotai:** Soft and smooth (weight: light), silk habotai adds a luxurious feel to semi-fitted dresses and tops.
- **Tencel Twill:** Eco-friendly and breathable (weight: light to medium), Tencel twill is perfect for creating semi-fitted garments with a modern touch.
- **Cotton Sateen:** With a slight sheen and soft touch (weight: light to medium), cotton sateen works well for semi-fitted dresses and tops with a polished appearance.

Remember to consider the pattern's style elements and the ease allowance while selecting the fabric. These woven fabrics, including polyester blends and light-weight denim, will ensure comfortable and stylish semi-fitted garments for various occasions. Happy sewing!

2. Preparing the Fabric:

a. Prewash the Fabric:

- Before starting your sewing project, it's essential to prewash the fabric to remove any sizing or shrinkage.
- Follow the fabric's care instructions for washing and drying.

b. Dry and Iron:

- After prewashing, dry the fabric according to the care instructions.
- Once dry, iron the fabric to remove any wrinkles and ensure it's smooth and flat.

c. Check Fabric Edges and Salvage Edge:

- Examine the edges of the fabric piece to ensure they are even and not cut in a slanted line.
- If the fabric is cut at an angle, take this into account when calculating the yardage needed.
- Do not include the salvage edge (the rough edge) into the calculations, as it may affect the look of the garment.

d. Use the Online Yardage Tool at Sewist.com:

- Visit Sewist.com and use the [online yardage tool](#) to estimate the amount of fabric required for your sewing pattern.
- Input the necessary measurements and details to get an accurate yardage estimate.

e. Check Sewing Pattern Instructions:

- Review the sewing pattern instructions to determine the number of fabric pieces to cut and if any of them need to be cut on the fold.
- Take note of any seam allowances on the edge of the fold line. If the seam allowance extends beyond the fold line, ignore it.

f. Language Options:

- If you need the sewing pattern instructions in German, French, Spanish, Italian, or Russian, you can download them from the sewing pattern page at Sewist.com.
- Simply go to the gallery, type in the design number, and proceed to the sewing pattern page.

g. Choose Your Cutting Method:

1. (Option 1)

- Print out the sewing pattern and tape the pages together to create the pattern pieces.
- Place the sewing pattern pieces on the fabric and use weights to keep them from shifting.
- Consider marking the outlines with a water-soluble or heat-erasable marker, transferring all marks and notches, and paying attention to the width of the seam allowances.

2. (Option 2)

- If you have an iPhone, you can use the augmented reality sewing pattern with the VectAR app.
- Download the app and print out the marker page, then follow the manual at [Sewist.com - VectAR Manual](#) to use the AR sewing pattern.

3. FUSIBLE INTERFACING

Applying Fusible Interfacing:

- a. Follow the Cutting instructions to determine the size and shape of the fusible interfacing needed.
- b. Prepare your work area by laying out the main fabric on the ironing board, with the wrong side facing up.
- c. Take the fusible interfacing and place it on top of the fabric, ensuring the adhesive side faces down.
- d. To protect the fabric, position a pressing cloth over the interfacing.
- e. Apply the fusible interfacing in manageable stages, focusing on one area at a time.
- f. With the iron held over the fabric, maintain a steady position for approximately 10 seconds.
- g. Keep the iron still during this time to prevent any movement of the fabric layers.
- h. Lift the iron and move on to the next area, repeating the process until all sections are covered.

- i. Allow the fused interfacing to cool down a bit before proceeding to the next step.

Applying Fusible Interfacing to Shoulder Edges:

- a. Cut a strap of fusible interfacing on bias, approximately 1.5 cm or 1/2 inch wide.
- b. From the wrong side of the main fabric, place the interfacing strip along the shoulder edges of the Front and Back pieces.
- c. This step helps stabilize and reinforce the edges, ensuring durability and shape retention.
- d. Refer to the *Figure on the right* for visual guidance.



4. Gathering the Back:

Sew a gathering stitch along the marked edge on the Back piece to create gathers and add fullness. Gather the fabric according to the desired length mentioned on the sewing pattern piece for Back.

5. Gathering the Front:

Sew a gathering stitch along the marked edge on the Front piece to create gathers and add fullness. Gather the fabric according to the desired length mentioned on the sewing pattern piece for Front.

6. - Sew a gathering stitch along the upper edge of the Lower Front Skirt and gather fullness. The desired length is mentioned on the top of the pattern block.
 - Sew Lower Front Skirt to Middle Front Skirt, serge and press towards top.
 - Sew a gathering stitch along the upper edge of the Middle Front Skirt and gather fullness. The desired length is mentioned on the top of the pattern block.
 - Sew Middle Front Skirt to Upper Front Skirt, serge and press towards top.
- Treat as one piece (Front Skirt) in the future.

7. Gathering the Front Skirt:

- Sew a gathering stitch along the upper edge of the Front Skirt. Use a long stitch length and leave long thread tails for easy gathering later.
- Gently pull the bobbin threads to gather the fullness evenly across the upper edge of the Front Skirt. Adjust the gathers until the width matches the specified length indicated on the sewing pattern piece for the Front Skirt.
- Once the fullness is evenly distributed and matches the specified length, knot or secure the gathering threads to hold the gathers in place. Be careful not to pull the threads too tightly, as it may distort the fabric.

8. - Sew a gathering stitch along the upper edge of the Lower Back Skirts and gather fullness. The desired length is mentioned on the top of the pattern block.
 - Sew Lower Back Skirts to Middle Back Skirts, serge and press towards top.
 - Sew a gathering stitch along the upper edge of the Middle Back Skirts and gather fullness. The desired length is mentioned on the top of the pattern block.
 - Sew Middle Back Skirts to Upper Back Skirts, serge and press towards top.
- Treat as one piece (Back Skirts) in the future.

9. Gathering the Back Skirts:

- Sew a gathering stitch along the upper edge of the Back Skirt. Use a long stitch length and leave long thread tails for easy gathering later.
- Gently pull the bobbin threads to gather the fullness evenly across the upper edge of the Back Skirt. Adjust the gathers until the width matches the specified length indicated on the sewing pattern piece for the Back Skirt.
- Once the fullness is evenly distributed and matches the specified length, knot or secure the gathering threads to hold the gathers in place. Be careful not to pull the threads too tightly, as it may distort the fabric.
- Repeat for the other Back Skirt.

10. Place the right Back Bodice and right Back Skirt together with right sides together, matching the side seams. Pin the bodice to the skirt, matching the darts/notches. Consider basting the seam first to be sure the seams match up perfectly and to prevent any shifting of fabric when stitching. Stitch together. Serge the seam allowances, and press them towards top. Repeat for the left Back Bodice and Left Back Skirt. Treat as whole Back pieces in the future.

11. CENTER BACK ZIPPER

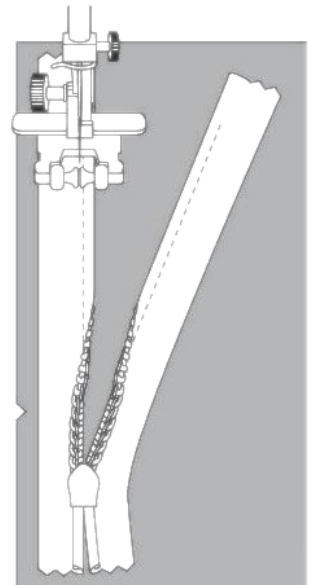
- Fold under the seam allowances along the center back seam. Push them down with your hand, but do not press them.

- Open the dress zipper. Put it down onto the center back edge, right sides together. The teeth of the zipper should be matched with the center back of the garment. The edge of the zipper tape is directed towards the edge of the seam allowance.

- Line up the upper end of the zipper 1mm lower than the marked stitch line of the neckline edge (not the edge of the seam allowance of the neckline) and baste the zipper tape to the seam allowance of center back. Do not baste through both layers of the main fabric, but to the seam allowance only. It is best to baste with slanted stitches at the center of the zipper tape. Baste both the left and the right sides of the zipper, from the upper edge downwards.

- Install the invisible zipper foot.

- Push down the teeth of the left side of the zipper with the nail of your index finger, and thread them into the special groove of the zipper foot. Make sure to uncurl the spiral of the zipper with your nail a bit, so that you can see the future stitch line. Adjust the position of the needle and stitch the zipper close to teeth. Make sure that the stitch line is exactly at the center back line. Stop at 2 cm from the slider. Leave long ends, pull them to



the wrong side, tie a knot and cut thread. (See Figure 1)

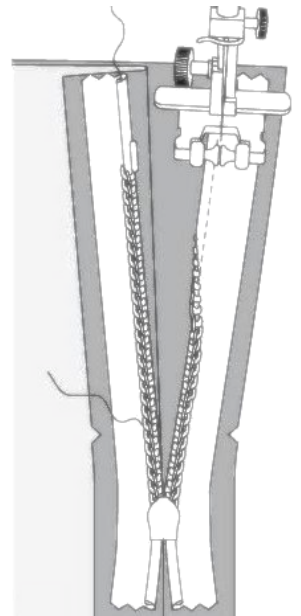
- Repeat for the right side of the zipper. Start stitching at the top and proceed downwards toward the hem. You may need to readjust the position of the needle depending on your zipper foot. (See Figure 2)

- Close the zipper.

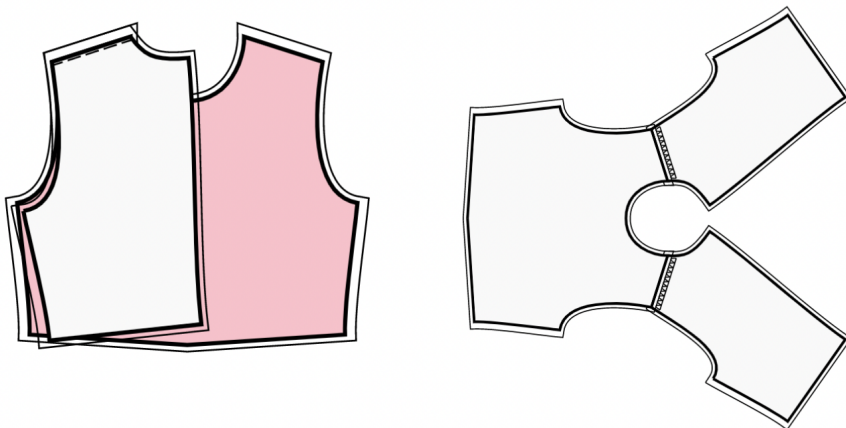
- Baste the center back seam, folding away the lower end of the zipper, so that you can baste it up to the stitch line of the zipper.

- Install the zipper foot. Sew the center back seam from the lower edge (or the vent upper corner, if there's a vent) and stitch as closely as you can to the end of the zipper.

- Remove baste stitches. Slipstitch the base of the opening for zipper. Press the seam apart, pressing the opening for the zipper at the same time.



12. Sew shoulder seams. Serge and press towards back.



13. Sew a gathering stitch along the marked edge on the Sleeve and gather fullness according to the length, mentioned on the pattern block.

14. Sew shoulder seams of neckline facings. Press seam apart and serge. Serge outer edge of facings. Pin facing onto Shell right sides together, adjusting neckline edges. Fold the facing away all the way along EXCEPT for the area 5 mm from the edge of dress zipper (or center back edge if the back has an opening) and pin it to upper edge of garment. Fold seam allowances along zipper (or center back edge) onto right side and pin to neckline on top of facings. Sew the neckline continuously from lower corner of Right Front to center back, and from center back to lower corner of Left Front. Clip into curves, turn pieces right side out and press. Slip stitch facing to seam allowances of shoulder seam on Shell. Slipstitch facing to zipper tape, or the seam allowances along the center back edge, in case the back has an opening at the top.

15. WRAP EFFECT

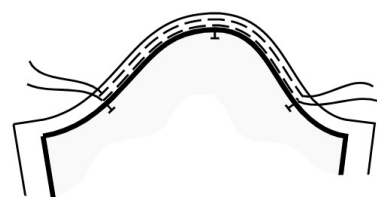
- Place Right Front over Left Front, right side over right side, and match the side edges, the markings along the lower edge and the center front line. Baste together along the lower edge and treat as Front Bodice in the future.

- Place the Front Bodice and Front Skirt together with right sides together, matching the side seams. Pin the bodice to the skirt, matching the darts/notches. Consider basting the seam first to be sure the seams match up perfectly and to prevent any shifting of fabric when stitching. Stitch together. Serge the seam allowances, and press them towards top. Treat as a whole Front piece in the future.

16. SEW SLEEVES INTO ARMHOLES

- Stitch two parallel gathering stitches along the sleeve cap, between the two markings at the back and at the front of the sleeve. Leave the ends of threads on each side, at least 10 cm (4 inches) long.

The first stitch line should be placed at 0.1 mm above the marked stitch line, the second stitch line should be placed at 0.5 mm above the first stitch line. (See Figure 1)



- Gather ease, pulling the lower thread. Press the cap of the sleeve, easing it in, 1-1.5 cm at a time. (See Figure 2)

OPEN ARMHOLE (side seams and sleeve seam not sewn yet):

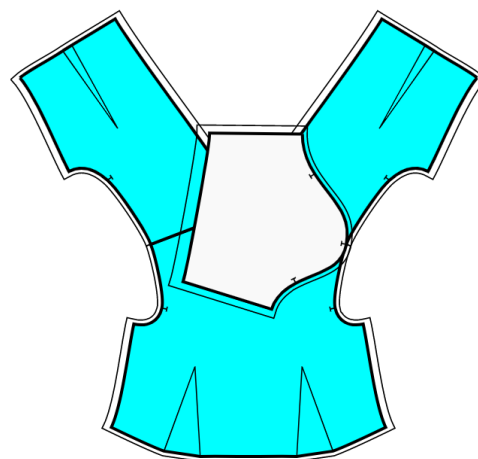
- Pin the sleeve to the bodice (Right Back, Front and Left Back, connected at the shoulder seams). The side edges of the seam should line up with the side edges of the Front / Back, correspondingly. The upper mark on the cap of the sleeve should line up with the shoulder seam - see Figure 3. Baste the sleeve into the armhole, matching the markings at the front and back armholes with the markings at the front and back sides of the cap.

- Sew the seam, with the sleeve on top, and the bodice at the bottom, so that you can control the ease and make sure there are no unwanted tucks at the cap.

- If there are any uneven edges at the cap due to easing it in, trim the seam allowance a little bit to have a smooth line at the edge. Serge the seam with the sleeve on top, and the bodice at the bottom.

- Serge the cap edge with the sleeve on top, and bodice at the bottom.

- Press towards the sleeve.



17. Garment Assembly

1. **Aligning Right Sides and Pinning:** Carefully place the Back piece onto the Front piece, right sides together. Take your time to align the following elements for a proper fit: the armholes, the lower edge of the sleeve, the waist seam, and the hem of the garment. Once aligned, use pins to secure them in place. Pins will help keep everything in order.
2. **Side Seam Stitching:** Commence stitching from the armhole corner, sewing a straight line down to the hem of the garment. This seam forms the side of your dress. Proceed deliberately, removing pins as you sew. Remember to begin and end your seam with a few backstitches to secure it.
3. **Sleeve Seam Sewing:** Transition to the sleeve section. Stitch a straight line from the armhole down to the lower edge of the sleeve. This creates the sleeve seam. Once again, take your time and remove pins as you progress. Ensure that you commence and conclude your seam with backstitches.
4. **Seam Finishing and Pressing:** After completing the stitching, it's important to finish the raw edges of the fabric to prevent fraying. You can accomplish this using a serger or by employing a zigzag stitch on your sewing machine. Subsequently, press the seams towards the back of the garment or the back part of the sleeve.

18. HEM FINISHING

- a. **Serge Hem** Using a serger or overlock machine, serge the raw edge of the hem to prevent fraying.
- b. **Turn Under and Press:** Turn the serged edge of the hem towards the wrong side of the fabric. Press the folded hem in place with an iron to create a crisp edge.
- c. **Topstitch or Slip Stitch:** Choose your desired finishing method:
 - **Topstitch:** Sew a straight stitch along the folded edge of the hem, securing it in place.
 - **Slip Stitch:** Use a hand sewing needle and matching thread to invisibly stitch the folded hem to the main fabric.

19. Sleeve facings

- Sew the side edges of sleeve facings. Press the seam open.
- Serge the outer edge of the facing.
- Pin Sleeve Facings to Sleeves right sides together, and sew along the edge.
- Clip into curves, trim corners, and turn the facing onto the wrong side. Press. Topstitch along the edge.

20. Elastic Insertion for Sleeve

1. **Unrip a Small Section of the Sleeve Facing Seam:** Carefully unpick or unrip a small section of the seam on the side of the sleeve facing. This will create an opening for inserting the elastic.
2. **Measure the Elastic:** Use a measuring tape to determine the length of elastic needed. Measure around your elbow and then reduce this measurement by 10%.
3. **Insert the Elastic:** Take one end of the elastic tape and attach a safety pin or bodkin to it. Insert the pinned end into the opening you created by unripping the seam. Gently guide the elastic through the channel, making sure it goes all the way around the sleeve facing.
4. **Secure the Elastic Ends:** Once both ends of the elastic tape are out of the sleeve facing, securely sew them together. You can use a sewing machine or hand-sew them together. Ensure that the elastic is firmly fastened, creating a loop.
5. **Close the Seam:** Carefully sew the small section of the seam that you unripped to create the opening. Stitch

it closed using a straight stitch on a sewing machine or by hand with a needle and thread. Ensure that the elastic tape is not caught in the seam as you sew it closed.

TECHNICAL DRAWING:

