

Sewing Pattern #4756064

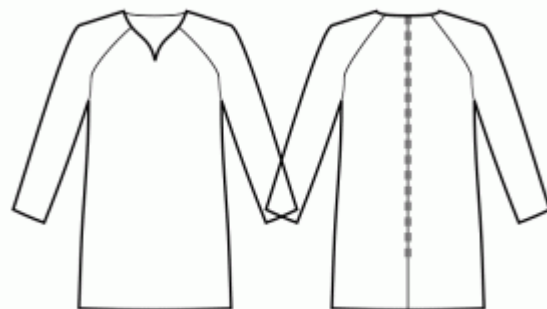
Dress - Oversize fit - Micro length - Raglan sleeves - Seashell neckline - No collar - No front closure - Standard raglan - Tunic dress (no darts, straight side seams) - Plain skirt - No darts on the back - 1-seam raglan sleeve, full length

Note on seam allowances:

- If the pattern has double contour the seam allowances are included.
- If the pattern has single contour, the seam allowances are NOT included and need to be added when laying out the pattern.

Note on length of fabric:

Attention! The amount of fabric needed for your pattern is not included. It will depend on the selected pattern size, the width, and design of the fabric you plan to use. You are welcome to use the Online Fabric Estimator to make calculations. Alternatively, print all the paper patterns and lay them out at the width of fabric you plan to use (usually from 90 to 150 cm). Measure how much fabric you will need. Don't forget to account for pieces that need to be cut multiple times and pieces that are cut on the fold.



PRINTING:

Please use Adobe Reader software to open your PDF pattern. You can get Adobe Reader free of charge at this link - <https://get.adobe.com/reader/>.

Make sure you print your patterns at actual size (100%% scale or None) and on single sides of plain A4 paper. Verify that the print out size is to the correct scale by measuring the test square on the first page. The upper edge of the square features a centimeter scale, and the bottom edge features an inch scale.

Trim top and/or right margin of the pages where you see the scissors symbols. In the center of each page, the number of row and column is printed, separated by / sign. Construct layout pages according to these marks (for example, page marked 2/3 is in the second row and in the third column). Align pages using margins and tape or glue together.

CUTTING:

Note on cutting:

Lay out your pieces according to straight of grain as marked on the pattern pieces.

Some pieces will be cut on the fold, the corresponding edge will then be marked with a fold mark. Kindly pay attention to notes regarding type of fabric and quantity of required pieces on a block. For example, [Main, Interfacing - cut 1+1] on a pattern piece means that you need to cut 1 piece as is and 1 mirrored piece from the main fabric as well as from interfacing.

Make sure to mark all notches and other design features such as pleats etc. from the pattern piece onto your fabric. When sewing the garment, pay attention to notches, they must match up.

* The capital letters in brackets correspond to pattern blocks as seen in Online Fabric Estimator and in pattern blocks preview on the right.

INSTRUCTIONS:

1. Recommended fabric for your sewing pattern:

For Oversize Streetwear Tops and Dresses:

- **Cotton:** Lightweight and breathable, perfect for creating comfortable and relaxed oversize tops and dresses.
- **Rayon Challis:** Soft and drapey, rayon challis is an excellent choice for flowy and stylish streetwear tops and dresses.
- **Lightweight Denim:** For a trendy and casual look, lightweight denim is ideal for oversize streetwear tops and dresses.
- **Viscose:** With a soft and smooth texture, viscose offers a luxurious feel for your streetwear pieces.
- **Crepe:** Provides a refined and elegant appearance for oversize streetwear tops and dresses.
- **Linen Blend:** Offers a cool and breezy option for creating oversized streetwear pieces.
- **Modal:** Soft and comfortable, modal is a great choice for creating cozy and stylish tops and dresses.
- **Polyester Blends:** Versatile and durable, polyester blends provide a wrinkle-resistant option for your oversize streetwear projects.

For Jackets and Coats:

- **Wool Blends:** A classic choice for oversize jackets and coats, offering warmth and structure.
- **Heavy Cotton Twill:** Durable and sturdy, heavy cotton twill provides a casual look for oversize outerwear.
- **Canvas:** A tough and heavy fabric, perfect for creating stable and structured oversize jackets and coats.
- **Denim:** Versatile and durable, denim is a great option for creating stylish oversize jackets and coats.
- **Boucle:** With a textured appearance, boucle adds a touch of elegance to oversize coats and jackets.
- **Tweed:** Provides a classic and sophisticated look with added warmth for oversize outerwear.
- **Wool Melton:** A dense and smooth fabric, offering warmth and structure for oversize coats.

Note: If you want to add lining to your garment, you may use the same pattern pieces for the main fabric, except for the width of the facings (along the neck, center front, etc.), which should be adjusted to accommodate the lining. Additionally, consider adding approximately 1 cm to the center back seam to allow for ease when attaching the lining. This will create a polished and professional finish for your oversize outerwear pieces. Happy sewing!

2. Preparing the Fabric:

a. Prewash the Fabric:

- Before starting your sewing project, it's essential to prewash the fabric to remove any sizing or shrinkage.
- Follow the fabric's care instructions for washing and drying.

b. Dry and Iron:

- After prewashing, dry the fabric according to the care instructions.
- Once dry, iron the fabric to remove any wrinkles and ensure it's smooth and flat.

c. Check Fabric Edges and Salvage Edge:

- Examine the edges of the fabric piece to ensure they are even and not cut in a slanted line.
- If the fabric is cut at an angle, take this into account when calculating the yardage needed.
- Do not include the salvage edge (the rough edge) into the calculations, as it may affect the look of the garment.

d. Use the Online Yardage Tool at Sewist.com:

- Visit Sewist.com and use the [online yardage tool](#) to estimate the amount of fabric required for your sewing pattern.
- Input the necessary measurements and details to get an accurate yardage estimate.

e. Check Sewing Pattern Instructions:

- Review the sewing pattern instructions to determine the number of fabric pieces to cut and if any of them need to be cut on the fold.
- Take note of any seam allowances on the edge of the fold line. If the seam allowance extends beyond the fold line, ignore it.

f. Language Options:

- If you need the sewing pattern instructions in German, French, Spanish, Italian, or Russian, you can download them from the sewing pattern page at Sewist.com.
- Simply go to the gallery, type in the design number, and proceed to the sewing pattern page.

g. Choose Your Cutting Method:

1. (Option 1)

- Print out the sewing pattern and tape the pages together to create the pattern pieces.
- Place the sewing pattern pieces on the fabric and use weights to keep them from shifting.
- Consider marking the outlines with a water-soluble or heat-erasable marker, transferring all marks and notches, and paying attention to the width of the seam allowances.

2. (Option 2)

- If you have an iPhone, you can use the augmented reality sewing pattern with the VectAR app.
- Download the app and print out the marker page, then follow the manual at [Sewist.com - VectAR Manual](#) to use the AR sewing pattern.

3. Cut a strap of fusible interfacing on bias, approximately 1.5 cm or 1/2 inch wide, and apply it to the neckline edges on the Front and on the Back, from the wrong side of the main fabric, to stabilise the edges (see the Figure on the right).



4. CENTER BACK ZIPPER

- Fold under the seam allowances along the center back seam. Push them down with your hand, but do not press them.

- Open the dress zipper. Put it down onto the center back edge, right sides together. The teeth of the zipper should be matched with the center back of the garment. The edge of the zipper tape is directed towards the edge of the seam allowance.

- Line up the upper end of the zipper 1mm lower than the marked stitch line of the neckline edge (not the edge of the seam allowance of the neckline) and baste the zipper tape to the seam allowance of center back. Do not baste through both layers of the main fabric, but to the seam allowance only. It is best to baste with slanted stitches at the center of the zipper tape. Baste both the left and the right sides of the zipper, from the upper edge downwards.

- Install the invisible zipper foot.

- Push down the teeth of the left side of the zipper with the nail of your index finger, and thread them into the special groove of the zipper foot. Make sure to uncurl the spiral of the zipper with your nail a bit, so that you can see the future stitch line. Adjust the position of the needle and stitch the zipper close to teeth. Make sure that the stitch line is exactly at the center back line. Stop at 2 cm from the slider. Leave long ends, pull them to the wrong side, tie a knot and cut thread. (See Figure 1)

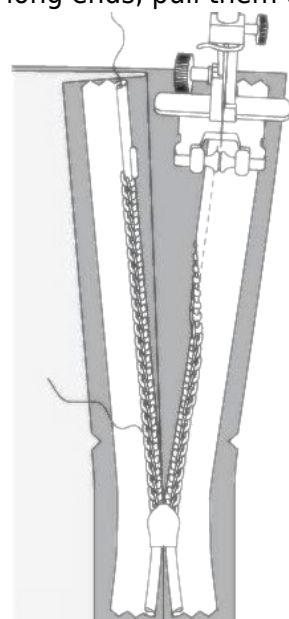
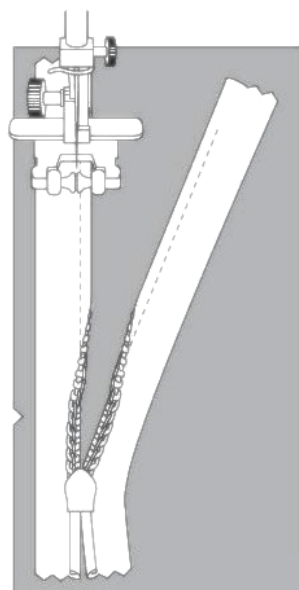
- Repeat for the right side of the zipper. Start stitching at the top and proceed downwards toward the hem. You may need to readjust the position of the needle depending on your zipper foot. (See Figure 2)

- Close the zipper.

- Baste the center back seam, folding away the lower end of the zipper, so that you can baste it up to the stitch line of the zipper.

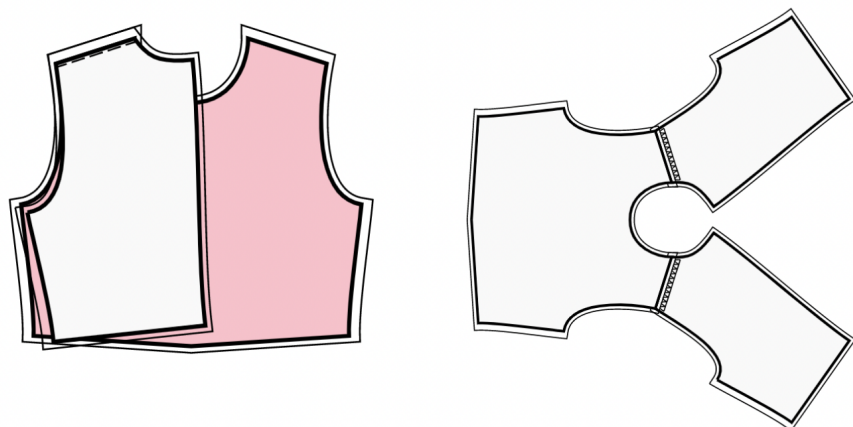
- Install the zipper foot. Sew the center back seam from the lower edge (or the vent upper corner, if there's a vent) and stitch as closely as you can to the end of the zipper.

- Remove baste stitches. Slipstitch the base of the opening for zipper. Press the seam apart, pressing the opening for the zipper at the same time.



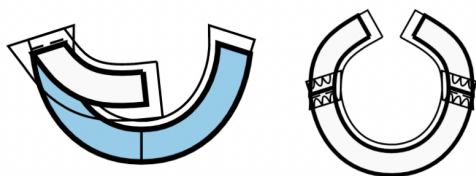
5. Sew shoulder and upper sleeve seams. Serge and press towards back.

6. Sew shoulder seams. Serge and press towards back.

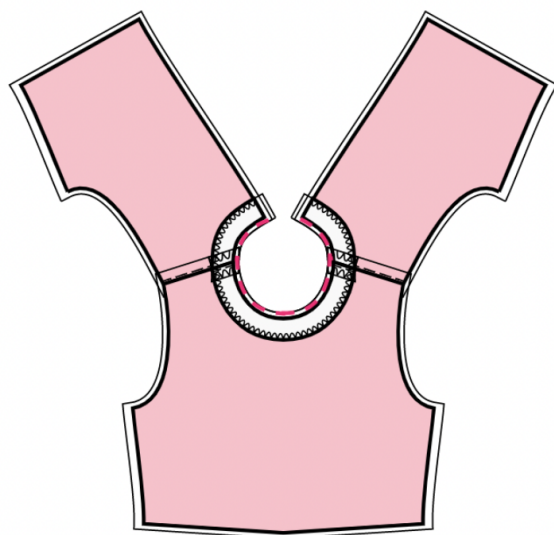


7. NECKLINE FACING

- Sew shoulder seams of neckline facings. Press seam apart and serge.



- Serge outer edge of facings.
- Pin facing onto Shell right sides together, adjusting neckline edges. Fold the facing away all the way along EXCEPT for the area 5 mm from the edge of dress zipper (or center back edge if the back has an opening) and pin it to upper edge of garment. Fold seam allowances along zipper ((or center back edge) onto right side and pin to neckline on top of facings.
- Sew the neckline. Clip into curves, trim the corners, turn pieces right side out and press.
- Slipstitch facing to seam allowances of shoulder seam on Shell. Slipstitch facing to zipper tape, or the seam allowances along the center back edge, in case the back has an opening at the top.



TECHNICAL DRAWING:

