

Sewing Pattern #4214123

Dress - Oversize fit - Tea length - Regular armholes - Jewel neckline - Mandarin collar - Polo button placket - Dress with empire waist - 3-Tiered skirt - Front armhole and waist darts - Back waist dart - Long sleeve gathered at standard cuff

Note on seam allowances:

- If the pattern has double contour the seam allowances are included.
- If the pattern has single contour, the seam allowances are NOT included and need to be added when laying out the pattern.

Note on length of fabric:

Attention! The amount of fabric needed for your pattern is not included. It will depend on the selected pattern size, the width, and design of the fabric you plan to use. You are welcome to use the Online Fabric Estimator to make calculations. Alternatively, print all the paper patterns and lay them out at the width of fabric you plan to use (usually from 90 to 150 cm). Measure how much fabric you will need. Don't forget to account for pieces that need to be cut multiple times and pieces that are cut on the fold.



PRINTING:

Please use Adobe Reader software to open your PDF pattern. You can get Adobe Reader free of charge at this link - <https://get.adobe.com/reader/>.

Make sure you print your patterns at actual size (100%% scale or None) and on single sides of plain A4 paper. Verify that the print out size is to the correct scale by measuring the test square on the first page. The upper edge of the square features a centimeter scale, and the bottom edge features an inch scale.

Trim top and/or right margin of the pages where you see the scissors symbols. In the center of each page, the number of row and column is printed, separated by / sign. Construct layout pages according to these marks (for example, page marked 2/3 is in the second row and in the third column). Align pages using margins and tape or glue together.

CUTTING:

Note on cutting:

Lay out your pieces according to straight of grain as marked on the pattern pieces.

Some pieces will be cut on the fold, the corresponding edge will then be marked with a fold mark. Kindly pay attention to notes regarding type of fabric and quantity of required pieces on a block. For example, [Main, Interfacing - cut 1+1] on a pattern piece means that you need to cut 1 piece as is and 1 mirrored piece from the main fabric as well as from interfacing.

Make sure to mark all notches and other design features such as pleats etc. from the pattern piece onto your fabric. When sewing the garment, pay attention to notches, they must match up.

* The capital letters in brackets correspond to pattern blocks as seen in Online Fabric Estimator and in pattern blocks preview on the right.

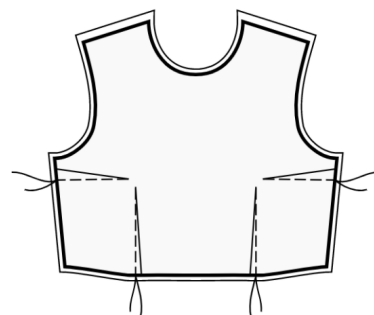
INSTRUCTIONS:

1. Apply fusible interfacing according to the Cutting instructions. Lay out your main fabric on the ironing board with the wrong side of the fabric up. Place the interfacing on top with the adhesive facing down. Place a pressing cloth over the top. Apply fusible interfacing in stages, covering a certain area at a time. Hold the iron over the fabric for about 10 seconds. Keep the iron still so that the fabric layers don't move around. Lift the iron and proceed to the next area. Leave it to cool a little before moving onto the next stage.

Cut a strap of fusible interfacing on bias, approximately 1.5 cm or 1/2 inch wide, and apply it to the shoulder edges on the Front and on the Back, from the wrong side of the main fabric, to stabilise the edges (see the Figure on the right).



2. Stitch bust and waist darts on Front pieces. Start from the edge of the fabric, and stitch towards the dart corner, using a narrow stitch. Do not backstitch, leave long threads and tie a knot. Press the bulk of bust darts towards top and waist darts toward the center.



3. Sew darts on Back pieces. Start from the edge of the fabric, and stitch towards the dart corner, using a narrow stitch. Do not backstitch, leave long threads and tie a knot. Press bulk of darts towards center back (see Figure in the right).



4. - Sew a gathering stitch along the upper edge of the Lower Front Skirt and gather fullness. The desired

length is mentioned on the top of the pattern block.

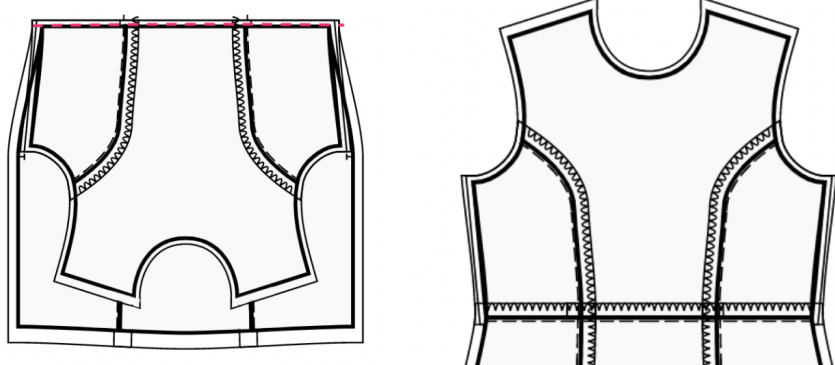
- Sew Lower Front Skirt to Middle Front Skirt, serge and press towards top.
 - Sew a gathering stitch along the upper edge of the Middle Front Skirt and gather fullness. The desired length is mentioned on the top of the pattern block.
 - Sew Middle Front Skirt to Upper Front Skirt, serge and press towards top.
- Treat as one piece (Front Skirt) in the future.

5. Sew a gathering stitch along the upper edge of the Front Skirt and gather fullness. The desired length is mentioned on the top of the pattern block.

6. - Sew a gathering stitch along the upper edge of the Lower Back Skirts and gather fullness. The desired length is mentioned on the top of the pattern block.
- Sew Lower Back Skirts to Middle Back Skirts, serge and press towards top.
 - Sew a gathering stitch along the upper edge of the Middle Back Skirts and gather fullness. The desired length is mentioned on the top of the pattern block.
 - Sew Middle Back Skirts to Upper Back Skirts, serge and press towards top.
- Treat as one piece (Back Skirts) in the future.

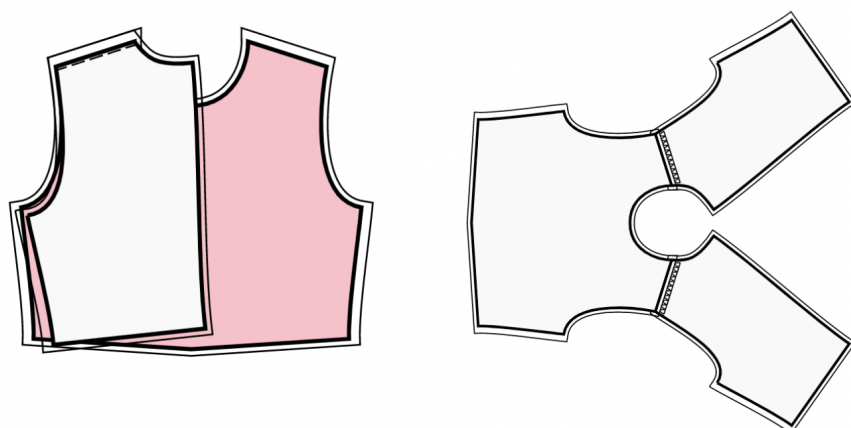
7. Sew a gathering stitch along the upper edge of the Back Skirts and gather fullness. The desired length is mentioned on the top of the pattern block.

8. Place the Front Bodice and Front Skirt together with right sides together, matching the side seams. Pin the bodice to the skirt, matching the center front lines. The darts/notches should line up. Consider basting the seam first to be sure the seams match up perfectly and to prevent any shifting of fabric when stitching. Stitch together. Serge the seam allowances, and press them towards top. Treat as one Front piece in the future.
For example:



9. Place the right Back Bodice and right Back Skirt together with right sides together, matching the side seams. Pin the bodice to the skirt, matching the darts/notches. Consider basting the seam first to be sure the seams match up perfectly and to prevent any shifting of fabric when stitching. Stitch together. Serge the seam allowances, and press them towards top. Repeat for the left Back Bodice and Left Back Skirt. Treat as whole Back pieces in the future.

10. Sew shoulder seams. Serge and press towards back.



11. Pin collars pairwise right sides together and sew outer edge and corners. Trim seams, turn collar right side out and press.

Sew outer collar stand into front neckline, clip into curves and press seam towards collar. Turn inner collar edge under and topstitch into neckline connecting seam.

12. BUTTON PLACKET

- Pin the longer edge of button placket to the center front edge, right sides together, and sew. Press towards placket.

- Fold placket in half, right sides together, and sew upper corner. Trim corners, clip into corners. Turn the placket right side out, straighten the corner, and press.

- Repeat for the other side.

13. Slash slit on sleeve along the marked line. Stop at 1 cm from the end. (Figure 1)

Cut bias tape from main fabric (or take ready), its width should equal 4 cm and length should equal two lengths of slit + 4 cm. You may also use a ready bias tape.

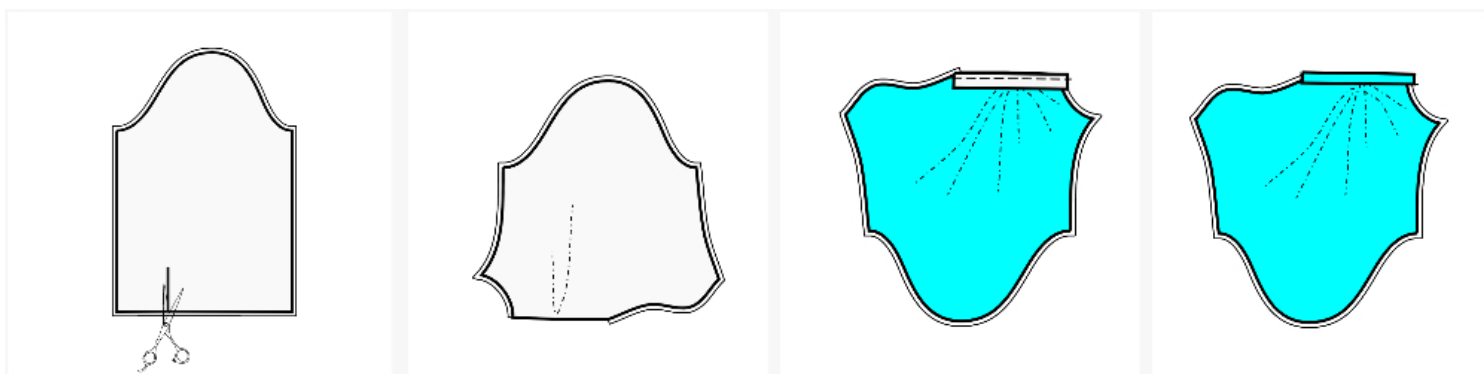
Spread the slit so that it forms a straight line. (Figure 2)

Sew bias tape to slit of sleeve:

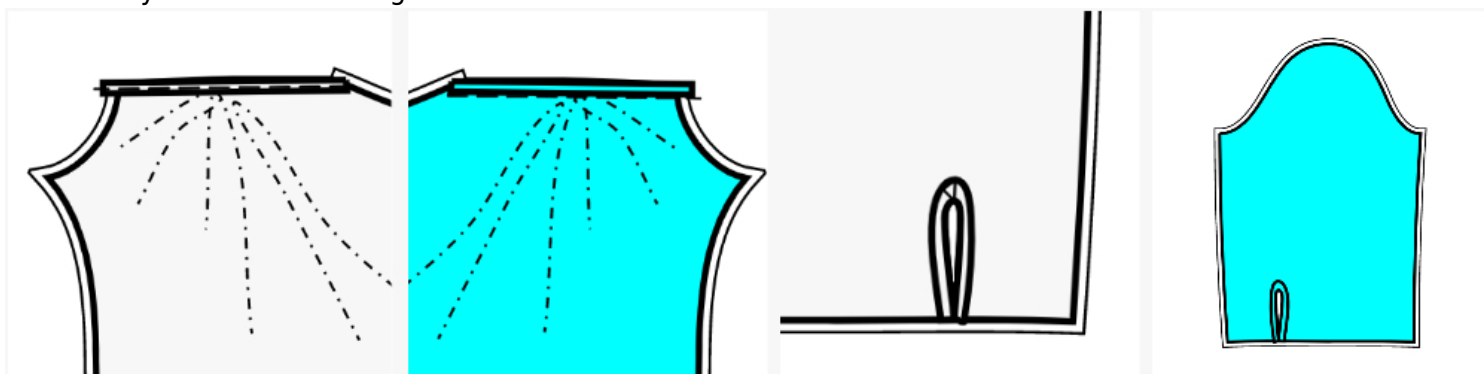
- Pin bias tape to the slit edge from the right side. The longer edge of the bias tape matches the edge of the slit. Baste the bias tape in place.

- Sew at 5-7 mm from the edge up to the slit corner. Stop the sewing machine, leave the needle in fabric. Raise the foot, straighten the slit, lower the foot, and then continue sewing. (Figure 3)

- Fold the bias tape towards edge and press. (Figure 4)



- Trim the seam allowance of the slit to 3-5 mm. Trim the bias tape to 1-1.2 cm. These recommendations are valid for natural/mixed woven thin and well draping fabrics, suitable for blouses.
- Fold bias tape onto the wrong side. Fold under the inner edge, and baste. (Figure 5)
- Stitch in the ditch from the right side, into the first seam of the bias tape, connecting the inner side of the bias tape to the fabric. The ready trimming is approximately 4 mm wide.(Figure 6)
- Match the sides of the slit, and fold the sleeve right sides together along the slit line.
- Sew the corner of the trimming by a slanted stitch, like a small dart.
- On the wrong side, press the corner of the 'dart' towards one side and slipstitch it in place. (Figure 7)
- The ready slit is shown in Figure 8.



14. Put Back onto the Front, right sides together, matching the armholes, the lower edge of the sleeve, the waist seam, and the hem of garment.

Sew side seam from the armhole corner down to hem. Sew the sleeve seam from the armhole to the lower edge of the sleeve. Serge and press towards back.

15. Fold cuff in half lengthwise, right sides together and sew short sides. Start stitching exactly at the line which marks the seam between cuff and sleeve. Turn cuff right side out and press. Sew outer side of cuff to lower edge of sleeve. Fold inside inner side of cuff and stitch in the ditch. Make buttonholes on cuffs and sew on buttons.

16. Serge hem, turn under, press and topstitch or slip stitch as desired.

TECHNICAL DRAWING:

