

Sewing Pattern #4214195

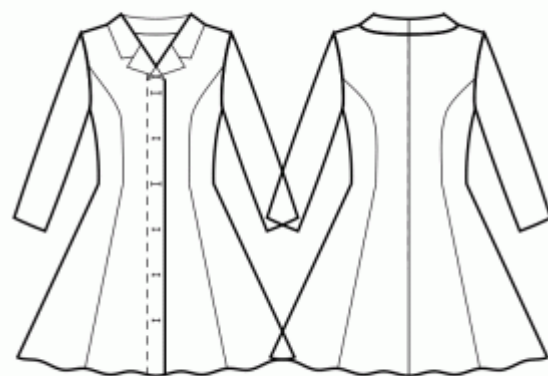
Dress - Fitted - Above knee length - Regular armholes - V-neckline - Jacket style collar with standard lapel - Closure from neckline to hem with folded placket - Dress without waist seam - No waist seam, half circle panel skirt - Princess front seam: upper armhole to waist - Back princess seam armhole to waist - Long sleeve

Note on seam allowances:

- If the pattern has double contour the seam allowances are included.
- If the pattern has single contour, the seam allowances are NOT included and need to be added when laying out the pattern.

Note on length of fabric:

Attention! The amount of fabric needed for your pattern is not included. It will depend on the selected pattern size, the width, and design of the fabric you plan to use. You are welcome to use the Online Fabric Estimator to make calculations. Alternatively, print all the paper patterns and lay them out at the width of fabric you plan to use (usually from 90 to 150 cm). Measure how much fabric you will need. Don't forget to account for pieces that need to be cut multiple times and pieces that are cut on the fold.



PRINTING:

Please use Adobe Reader software to open your PDF pattern. You can get Adobe Reader free of charge at this link - <https://get.adobe.com/reader/>.

Make sure you print your patterns at actual size (100%% scale or None) and on single sides of plain A4 paper. Verify that the print out size is to the correct scale by measuring the test square on the first page. The upper edge of the square features a centimeter scale, and the bottom edge features an inch scale.

Trim top and/or right margin of the pages where you see the scissors symbols. In the center of each page, the number of row and column is printed, separated by / sign. Construct layout pages according to these marks (for example, page marked 2/3 is in the second row and in the third column). Align pages using margins and tape or glue together.

CUTTING:

Note on cutting:

Lay out your pieces according to straight of grain as marked on the pattern pieces.

Some pieces will be cut on the fold, the corresponding edge will then be marked with a fold mark. Kindly pay attention to notes regarding type of fabric and quantity of required pieces on a block. For example, [Main, Interfacing - cut 1+1] on a pattern piece means that you need to cut 1 piece as is and 1 mirrored piece from the main fabric as well as from interfacing.

Make sure to mark all notches and other design features such as pleats etc. from the pattern piece onto your fabric. When sewing the garment, pay attention to notches, they must match up.

* The capital letters in brackets correspond to pattern blocks as seen in Online Fabric Estimator and in pattern blocks preview on the right.

INSTRUCTIONS:

1. Apply fusible interfacing according to the Cutting instructions. Lay out your main fabric on the ironing board with the wrong side of the fabric up. Place the interfacing on top with the adhesive facing down. Place a pressing cloth over the top. Apply fusible interfacing in stages, covering a certain area at a time. Hold the iron over the fabric for about 10 seconds. Keep the iron still so that the fabric layers don't move around. Lift the iron and proceed to the next area. Leave it to cool a little before moving onto the next stage.

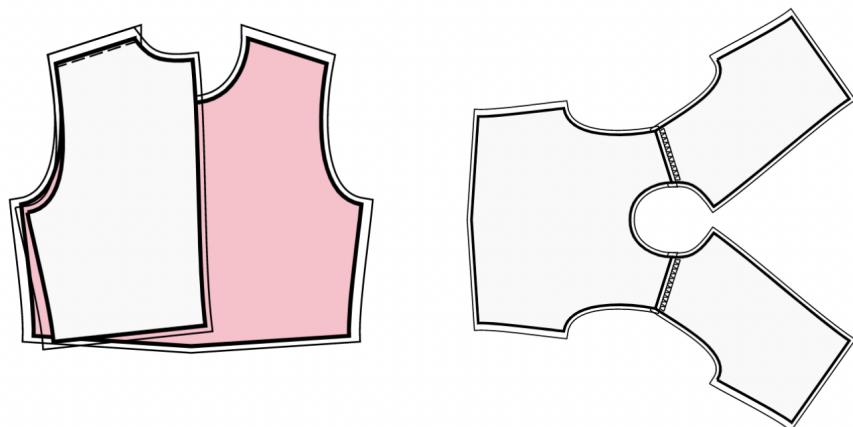
Cut a strap of fusible interfacing on bias, approximately 1.5 cm or 1/2 inch wide, and apply it to the shoulder edges on the Front and on the Back, from the wrong side of the main fabric, to stabilise the edges (see the Figure on the right).



2. Sew Side Backs to Center Backs. Clip into the seam allowance along the curve. Serge the seams and press towards the center. Treat as one piece (Backs) in the future.

3. Sew center back seam from top to hem. Press the seam apart.

4. Sew shoulder seams. Serge and press towards back.



5. JACKET STYLE COLLAR

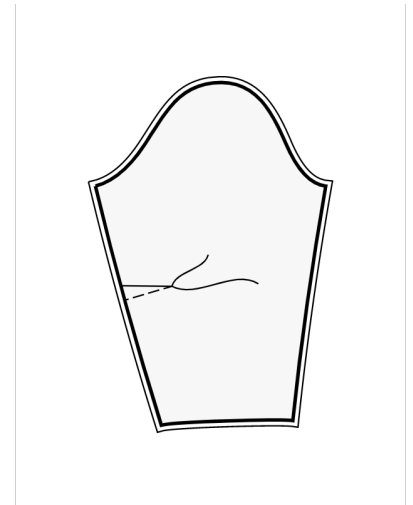
- Pin upper collar to lower collar and sew the corners and the fall (the outer edge of the collar). Start and stop sewing exactly at the T-notch that marks the position of the seam between the collar and the garment. Trim away corners, clip into the seam allowances near the T-notch. Turn the collar right side out, straighten and press.
- Pin back neckline facing to center front facing along the shoulder seams. Sew and press apart.
- Place the Center Front Facing onto Front, right sides together, pin together and sew along the center front edge. Sew upwards up to the T-notch marking the end of the collar seam. Trim away corners. Topstitch seam allowance along center front edge: (1) onto center front facing along the closure, and (2) onto front along the part, which is folded away when the collar is ready. Place stitch line at 0,2 cm from the seam. Turn center front facings onto the wrong side and straighten the seams.
- Pin the lower collar to the neckline of the Front and the Back, matching the edge of the collar with the T-notch, and matching the marks for shoulder seams and center back seam correspondingly. Sew.
- Pin the upper collar into the neckline of back facing and center front facing. matching the edge of the collar with the T-notch, and matching the marks for shoulder seams and center back seam correspondingly. Sew.
- Press the seam allowances of the collar seam apart, and slipstitch them together close to the seam.

6. Sew the elbow dart on the sleeve.

Start from the edge of the fabric, and stitch towards the dart corner, using a narrow stitch.

Do not backstitch, leave long threads and tie a knot.

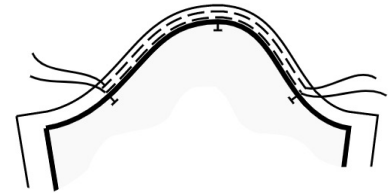
Press bulk of darts towards top. (see the Figure on the right).



7. SEW SLEEVES INTO ARMHOLES

- Stitch two parallel gathering stitches along the sleeve cap, between the two markings at the back and at the front of the sleeve. Leave the ends of threads on each side, at least 10 cm (4 inches) long.

The first stitch line should be placed at 0.1 mm above the marked stitch line, the second stitch line should be placed at 0.5 mm above the first stitch line. (See Figure 1)



- Gather ease, pulling the lower thread. Press the cap of the sleeve, easing it in, 1-1.5 cm at a time. (See Figure 2)

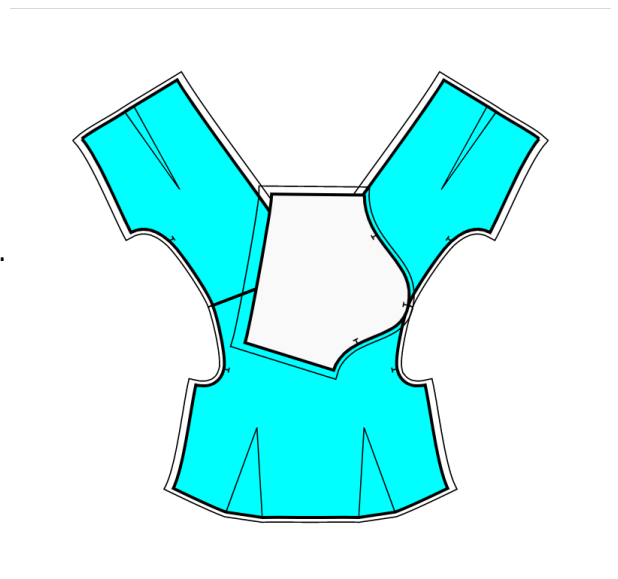
OPEN ARMHOLE (side seams and sleeve seam not sewn yet):

- Pin the sleeve to the bodice (Right Back, Front and Left Back, connected at the shoulder seams). The side edges of the seam should line up with the side edges of the Front / Back, correspondingly. The upper mark on the cap of the sleeve should line up with the shoulder seam - see Figure 3. Baste the sleeve into the armhole, matching the markings at the front and back armholes with the markings at the front and back sides of the cap.

- Sew the seam, with the sleeve on top, and the bodice at the bottom, so that you can control the ease and make sure there are no unwanted tucks at the cap.

- If there are any uneven edges at the cap due to easing it in, trim the seam allowance a little bit to have a smooth line at the edge. Serge the seam with the sleeve on top, and the bodice at the bottom.

- Serge the cap edge with the sleeve on top, and bodice at the bottom.



- Press towards the sleeve.

8. Put Back onto the Front, right sides together, matching the armholes, the lower edge of the sleeve, the waist seam, and the hem of garment.

Sew side seam from the armhole corner down to hem. Sew the sleeve seam from the armhole to the lower edge of the sleeve. Serge and press towards back.

9. Serge hem, turn under, press and topstitch or slip stitch as desired.

10. Serge lower edge of sleeves. Turn under, press and topstitch or slip stitch as desired.

11. Make button holes on the right front. Sew on buttons on the left front according to the markings and the button holes.

TECHNICAL DRAWING:

