

## Sewing Pattern #4400237

**Dress - Fitted - Below knee length - Regular armholes - Round neckline - Puritan collar - No front closure - Dress with waist seam - 6-panel skirt - Front french and waist darts - Back waist dart - Sleeve with bow cuff**

### Note on seam allowances:

- If the pattern has double contour the seam allowances are included.
- If the pattern has single contour, the seam allowances are NOT included and need to be added when laying out the pattern.

### Note on length of fabric:

Attention! The amount of fabric needed for your pattern is not included. It will depend on the selected pattern size, the width, and design of the fabric you plan to use. You are welcome to use the Online Fabric Estimator to make calculations. Alternatively, print all the paper patterns and lay them out at the width of fabric you plan to use (usually from 90 to 150 cm). Measure how much fabric you will need. Don't forget to account for pieces that need to be cut multiple times and pieces that are cut on the fold.



### PRINTING:

Please use Adobe Reader software to open your PDF pattern. You can get Adobe Reader free of charge at this link - <https://get.adobe.com/reader/>.

Make sure you print your patterns at actual size (100%% scale or None) and on single sides of plain A4 paper. Verify that the print out size is to the correct scale by measuring the test square on the first page. The upper edge of the square features a centimeter scale, and the bottom edge features an inch scale.

Trim top and/or right margin of the pages where you see the scissors symbols. In the center of each page, the number of row and column is printed, separated by / sign. Construct layout pages according to these marks (for example, page marked 2/3 is in the second row and in the third column). Align pages using margins and tape or glue together.

### CUTTING:

#### Note on cutting:

Lay out your pieces according to straight of grain as marked on the pattern pieces.

Some pieces will be cut on the fold, the corresponding edge will then be marked with a fold mark. Kindly pay attention to notes regarding type of fabric and quantity of required pieces on a block. For example, [ Main, Interfacing - cut 1+1 ] on a pattern piece means that you need to cut 1 piece as is and 1 mirrored piece from the main fabric as well as from interfacing.

Make sure to mark all notches and other design features such as pleats etc. from the pattern piece onto your fabric. When sewing the garment, pay attention to notches, they must match up.

\* The capital letters in brackets correspond to pattern blocks as seen in Online Fabric Estimator and in pattern blocks preview on the right.

## INSTRUCTIONS:

### 1. Recommended fabric for your sewing pattern:

- Cotton (lightweight to medium-weight, no elastane)
- Linen (lightweight to medium-weight, no elastane)
- Rayon (lightweight, no elastane)
- Chambray (lightweight, no elastane)
- Cotton Lawn (lightweight, no elastane, note: may be transparent)
- Cotton Sateen (medium-weight, no elastane)
- Viscose (lightweight, no elastane)
- Polyester-Cotton Blend (lightweight to medium-weight, may contain elastane)
- Polyester-Rayon Blend (lightweight to medium-weight, may contain elastane)
- Polyester-Linen Blend (lightweight to medium-weight, may contain elastane)

### 2. Zipper Length Note:

For patterns that are fitted in the waist, we recommend installing a zipper that goes below the waist level, approximately halfway to the hips. This placement ensures easy dressing and a smooth fit for your garment. However, for patterns that are not fitted in the waist or have a wider neckline, clients have the freedom to make their design decisions. They can choose to install a shorter zipper at the top or even skip the zipper altogether if they prefer. We understand that sewing in a zipper can be a complex step, and we want to provide flexibility in the construction process.

To determine the zipper length, look for the triangular zipper mark along the back seam of the pattern. Measure from the top corner of the back piece to the marking, possibly across several pieces if the zipper spans multiple sections. Generally, if a zipper of a similar length, or slightly shorter, is available, it should work well for your garment.

For the exact zipper length as specified in the pattern, please refer to the specification sheet.

### 3. Preparing the Fabric:

#### a. Prewash the Fabric:

- Before starting your sewing project, it's essential to prewash the fabric to remove any sizing or shrinkage.

- Follow the fabric's care instructions for washing and drying.
- b. Dry and Iron:**
  - After prewashing, dry the fabric according to the care instructions.
  - Once dry, iron the fabric to remove any wrinkles and ensure it's smooth and flat.
- c. Check Fabric Edges and Salvage Edge:**
  - Examine the edges of the fabric piece to ensure they are even and not cut in a slanted line.
  - If the fabric is cut at an angle, take this into account when calculating the yardage needed.
  - Do not include the salvage edge (the rough edge) into the calculations, as it may affect the look of the garment.
- d. Use the Online Yardage Tool at Sewist.com:**
  - Visit Sewist.com and use the [online yardage tool](#) to estimate the amount of fabric required for your sewing pattern.
  - Input the necessary measurements and details to get an accurate yardage estimate.
- e. Check Sewing Pattern Instructions:**
  - Review the sewing pattern instructions to determine the number of fabric pieces to cut and if any of them need to be cut on the fold.
  - Take note of any seam allowances on the edge of the fold line. If the seam allowance extends beyond the fold line, ignore it.
- f. Language Options:**
  - If you need the sewing pattern instructions in German, French, Spanish, Italian, or Russian, you can download them from the sewing pattern page at Sewist.com.
  - Simply go to the gallery, type in the design number, and proceed to the sewing pattern page.
- g. Choose Your Cutting Method:**
  1. (Option 1)
    - Print out the sewing pattern and tape the pages together to create the pattern pieces.
    - Place the sewing pattern pieces on the fabric and use weights to keep them from shifting.
    - Consider marking the outlines with a water-soluble or heat-erasable marker, transferring all marks and notches, and paying attention to the width of the seam allowances.
  2. (Option 2)
    - If you have an iPhone, you can use the augmented reality sewing pattern with the VectAR app.
    - Download the app and print out the marker page, then follow the manual at [Sewist.com - VectAR Manual](#) to use the AR sewing pattern.

#### 4. FUSIBLE INTERFACING

##### Applying Fusible Interfacing:

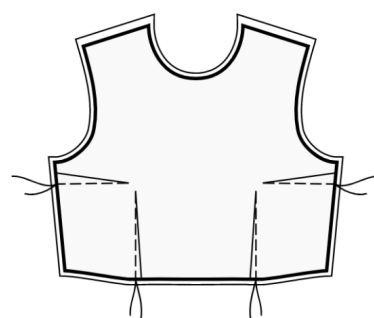
- a. Follow the Cutting instructions to determine the size and shape of the fusible interfacing needed.
- b. Prepare your work area by laying out the main fabric on the ironing board, with the wrong side facing up.
- c. Take the fusible interfacing and place it on top of the fabric, ensuring the adhesive side faces down.
- d. To protect the fabric, position a pressing cloth over the interfacing.
- e. Apply the fusible interfacing in manageable stages, focusing on one area at a time.
- f. With the iron held over the fabric, maintain a steady position for approximately 10 seconds.
- g. Keep the iron still during this time to prevent any movement of the fabric layers.
- h. Lift the iron and move on to the next area, repeating the process until all sections are covered.
- i. Allow the fused interfacing to cool down a bit before proceeding to the next step.

### Applying Fusible Interfacing to Shoulder Edges:

- Cut a strap of fusible interfacing on bias, approximately 1.5 cm or 1/2 inch wide.
- From the wrong side of the main fabric, place the interfacing strip along the shoulder edges of the Front and Back pieces.
- This step helps stabilize and reinforce the edges, ensuring durability and shape retention.
- Refer to the *Figure on the right* for visual guidance.



- Stitch bust and waist darts on Front pieces. Start from the edge of the fabric, and stitch towards the dart corner, using a narrow stitch. Do not backstitch, leave long threads and tie a knot. Press the bulk of bust darts towards the top and waist darts toward the center.



- Sew waist darts on Back pieces if these are present on your sewing pattern. Start from the edge of the fabric, and stitch towards the dart corner, using a narrow stitch. Do not backstitch, leave long threads and tie a knot. Press bulk of darts towards center back (see Figure in the right).



- Sew Front Side skirts to Front Center skirts matching notches. Serge and press towards center. Treat as one piece (Front Skirt) in the future.

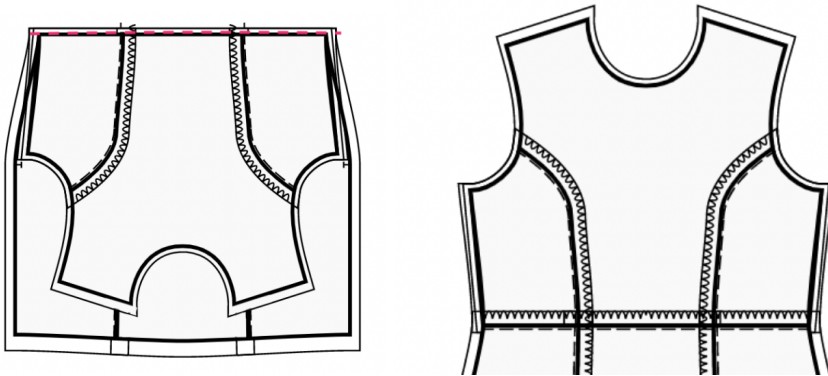
- Sew Back Side skirts to Back Center skirts matching notches. Serge and press towards center. Treat as one piece (Back Skirts) in the future.

### 9. Assembling Front Bodice and Front Skirt:

- Place the Front Bodice and Front Skirt pieces together with *right sides facing* each other. Match the side seams and pin them in place.
- Align the center front lines of both pieces and pin them together. Ensure the darts and notches line up correctly.
- For precise alignment and to prevent fabric shifting, consider *basting* the seam before stitching. Use a contrasting thread to make the basting stitches easily visible.
- Stitch* the pieces together along the pinned seam, using a straight stitch. *Backstitch* at the beginning and end for added durability.
- Serge* the seam allowances to finish the edges neatly.

- f. Press the seam allowances towards the top to flatten and set the seam.
- g. Treat the assembled Front Bodice and Front Skirt as one Front piece for further construction.

*Kindly note that the example below may showcase a slightly different pattern design, but the overall concept remains the same.*



10. Place the right Back Bodice and right Back Skirt together with right sides together, matching the side seams. Pin the bodice to the skirt, matching the darts/notches. Consider basting the seam first to be sure the seams match up perfectly and to prevent any shifting of fabric when stitching. Stitch together. Serge the seam allowances, and press them towards top. Repeat for the left Back Bodice and Left Back Skirt. Treat as whole Back pieces in the future.

## 11. CENTER BACK ZIPPER

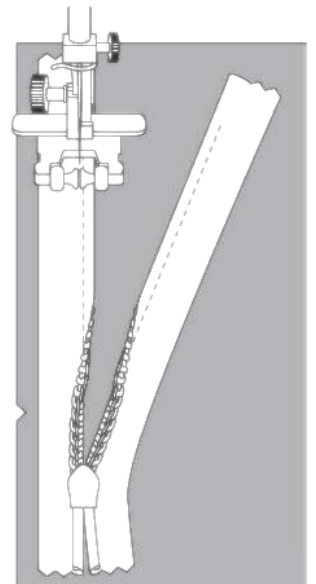
- Fold under the seam allowances along the center back seam. Push them down with your hand, but do not press them.

- Open the dress zipper. Put it down onto the center back edge, right sides together. The teeth of the zipper should be matched with the center back of the garment. The edge of the zipper tape is directed towards the edge of the seam allowance.

- Line up the upper end of the zipper 1mm lower than the marked stitch line of the neckline edge (not the edge of the seam allowance of the neckline) and baste the zipper tape to the seam allowance of center back. Do not baste through both layers of the main fabric, but to the seam allowance only. It is best to baste with slanted stitches at the center of the zipper tape. Baste both the left and the right sides of the zipper, from the upper edge downwards.

- Install the invisible zipper foot.

- Push down the teeth of the left side of the zipper with the nail of your index finger, and thread them into the special groove of the zipper foot. Make sure to uncurl the spiral of the zipper with your nail a bit, so that you can see the future stitch line. Adjust the position of the needle and stitch the zipper close to teeth. Make sure that the stitch line is exactly at the center back line. Stop at 2 cm from the slider. Leave long ends, pull them to



the wrong side, tie a knot and cut thread. (See Figure 1)

- Repeat for the right side of the zipper. Start stitching at the top and proceed downwards toward the hem. You may need to readjust the position of the needle depending on your zipper foot. (See Figure 2)

- Close the zipper.

- Baste the center back seam, folding away the lower end of the zipper, so that you can baste it up to the stitch line of the zipper.

- Install the zipper foot. Sew the center back seam from the lower edge (or the vent upper corner, if there's a vent) and stitch as closely as you can to the end of the zipper.

- Remove baste stitches. Slipstitch the base of the opening for zipper. Press the seam apart, pressing the opening for the zipper at the same time.



12. Sew shoulder seams. Serge and press towards back.



13. Pin collars pairwise right sides together and sew outer edge and corners. Trim seams, turn collar right side out and press.

Sew outer collar stand into front neckline, clip into curves and press seam towards collar. Turn inner collar edge under and topstitch into neckline connecting seam.

#### 14. SLEEVE WITH BOW CUFF

- Slash slit on sleeve along the marked line. Cut bias tape from main fabric (or take ready), its width should equal 4 cm and length should equal two lengths of slit + 4 cm. Fold bias tape in half lengthwise and press. Press outer seam allowances towards center. Sew bias tape to slit of sleeve (pin bias tape to slit edge from the right side and sew, fold bias tape onto wrong side and topstitch onto garment along fold line).

- Fold cuff in half lengthwise right sides together and sew from marking to fold on one side, and then from the marking to fold on the other side. Trim corners, clip into seam allowances near the marking. Fold the cuff right side out, straighten and press.

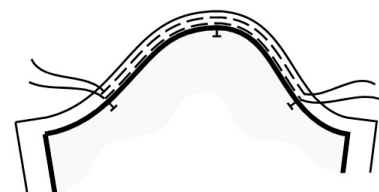


- Sew the sleeve seam.
- Sew a gathering stitch along the lower edge of the sleeve and gather to the length mentioned on the pattern block.
- Sew the outer side of the cuff to the lower edge of the sleeve. Fold under the inner edge of the cuff and stitch in the ditch from the right side.

## 15. SEW SLEEVES INTO ARMHOLES

- Stitch two parallel gathering stitches along the sleeve cap, between the two markings at the back and at the front of the sleeve. Leave the ends of threads on each side, at least 10 cm (4 inches) long.

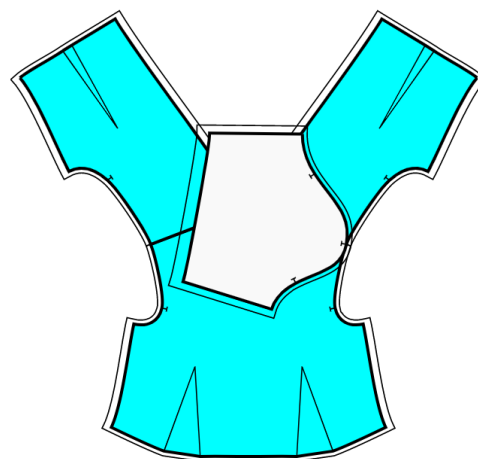
The first stitch line should be placed at 0.1 mm above the marked stitch line, the second stitch line should be placed at 0.5 mm above the first stitch line. (See Figure 1)



- Gather ease, pulling the lower thread. Press the cap of the sleeve, easing it in, 1-1.5 cm at a time. (See Figure 2)

OPEN ARMHOLE (side seams and sleeve seam not sewn yet):

- Pin the sleeve to the bodice (Right Back, Front and Left Back, connected at the shoulder seams). The side edges of the seam should line up with the side edges of the Front / Back, correspondingly. The upper mark on the cap of the sleeve should line up with the shoulder seam - see Figure 3. Baste the sleeve into the armhole, matching the markings at the front and back armholes with the markings at the front and back sides of the cap.



- Sew the seam, with the sleeve on top, and the bodice at the bottom, so that you can control the ease and make sure there are no unwanted tucks at the cap.

- If there are any uneven edges at the cap due to easing it in, trim the seam allowance a little bit to have a smooth line at the edge. Serge the seam with the sleeve on top, and the bodice at the bottom.

- Serge the cap edge with the sleeve on top, and bodice at the bottom.

- Press towards the sleeve.

## 16. SEW THE SIDE SEAMS

1. **Pin Front to Back:** Place the front piece over the back piece, ensuring that the right sides of the fabric are facing each other.
2. **Match Marks and Edges:** Align the waist marks or seams, the armholes, and the lower edges of the

pieces.

3. **Sew Side Seams:** Stitch along the sides to create the seams.
4. **Finish Edges:** After sewing, use a serger to finish the edges of the fabric.
5. **Press Towards Back:** Press the finished seams towards the back of the garment to give it a neat appearance.

## 17. HEM FINISHING

- a. **Serge Hem** Using a serger or overlock machine, serge the raw edge of the hem to prevent fraying.
- b. **Turn Under and Press:** Turn the serged edge of the hem towards the wrong side of the fabric. Press the folded hem in place with an iron to create a crisp edge.
- c. **Topstitch or Slip Stitch:** Choose your desired finishing method:
  - **Topstitch:** Sew a straight stitch along the folded edge of the hem, securing it in place.
  - **Slip Stitch:** Use a hand sewing needle and matching thread to invisibly stitch the folded hem to the main fabric.

## TECHNICAL DRAWING:



