

Sewing Pattern #1495779

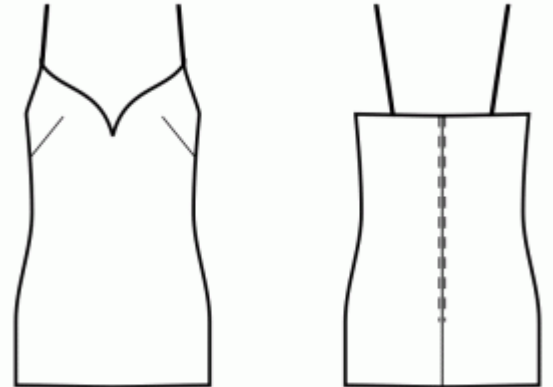
Dress - Bodycon (knit fabrics!) - Micro length - Deep decollete - No top decoration - No front closure - Shift slip dress - Plain skirt - Front French darts - No back darts - Thin straps

Note on seam allowances:

- If the pattern has double contour the seam allowances are included.
- If the pattern has single contour, the seam allowances are NOT included and need to be added when laying out the pattern.

Note on length of fabric:

Attention! The amount of fabric needed for your pattern is not included. It will depend on the selected pattern size, the width, and design of the fabric you plan to use. You are welcome to use the Online Fabric Estimator to make calculations. Alternatively, print all the paper patterns and lay them out at the width of fabric you plan to use (usually from 90 to 150 cm). Measure how much fabric you will need. Don't forget to account for pieces that need to be cut multiple times and pieces that are cut on the fold.



PRINTING:

Please use Adobe Reader software to open your PDF pattern. You can get Adobe Reader free of charge at this link - <https://get.adobe.com/reader/>.

Make sure you print your patterns at actual size (100%% scale or None) and on single sides of plain A4 paper. Verify that the print out size is to the correct scale by measuring the test square on the first page. The upper edge of the square features a centimeter scale, and the bottom edge features an inch scale.

Trim top and/or right margin of the pages where you see the scissors symbols. In the center of each page, the number of row and column is printed, separated by / sign. Construct layout pages according to these marks (for example, page marked 2/3 is in the second row and in the third column). Align pages using margins and tape or glue together.

CUTTING:

Note on cutting:

Lay out your pieces according to straight of grain as marked on the pattern pieces.

Some pieces will be cut on the fold, the corresponding edge will then be marked with a fold mark. Kindly pay attention to notes regarding type of fabric and quantity of required pieces on a block. For example, [Main, Interfacing - cut 1+1] on a pattern piece means that you need to cut 1 piece as is and 1 mirrored piece from the main fabric as well as from interfacing.

Make sure to mark all notches and other design features such as pleats etc. from the pattern piece onto your fabric. When sewing the garment, pay attention to notches, they must match up.

* The capital letters in brackets correspond to pattern blocks as seen in Online Fabric Estimator and in pattern blocks preview on the right.

INSTRUCTIONS:

1. Apply fusible interfacing according to the Cutting instructions. Lay out your main fabric on the ironing board with the wrong side of the fabric up. Place the interfacing on top with the adhesive facing down. Place a pressing cloth over the top. Apply fusible interfacing in stages, covering a certain area at a time. Hold the iron over the fabric for about 10 seconds. Keep the iron still so that the fabric layers don't move around. Lift the iron and proceed to the next area. Leave it to cool a little before moving onto the next stage.

2. Sew darts on Front pieces. Start from the edge of the fabric, and stitch towards the dart corner, using a narrow stitch. Do not backstitch, leave long threads and tie a knot. Cut bulk off of 1 cm, if desired, and serge the raw edge. Press towards top.

3. CENTER BACK ZIPPER

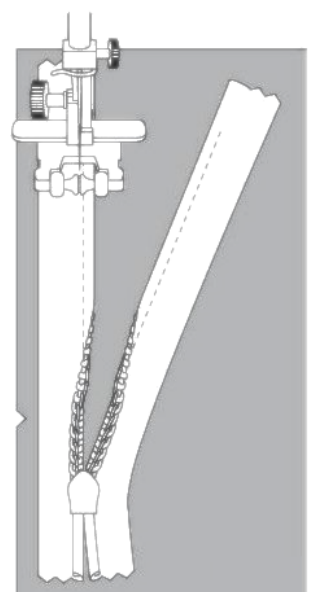
- Fold under the seam allowances along the center back seam. Push them down with your hand, but do not press them.

- Open the dress zipper. Put it down onto the center back edge, right sides together. The teeth of the zipper should be matched with the center back of the garment. The edge of the zipper tape is directed towards the edge of the seam allowance.

- Line up the upper end of the zipper 1mm lower than the marked stitch line of the neckline edge (not the edge of the seam allowance of the neckline) and baste the zipper tape to the seam allowance of center back. Do not baste through both layers of the main fabric, but to the seam allowance only. It is best to baste with slanted stitches at the center of the zipper tape. Baste both the left and the right sides of the zipper, from the upper edge downwards.

- Install the invisible zipper foot.

- Push down the teeth of the left side of the zipper with the nail of your index finger, and thread them into the special groove of the zipper foot. Make sure to uncurl the spiral of the zipper with your nail a bit, so that you



can see the future stitch line. Adjust the position of the needle and stitch the zipper close to teeth. Make sure that the stitch line is exactly at the center back line. Stop at 2 cm from the slider. Leave long ends, pull them to the wrong side, tie a knot and cut thread. (See Figure 1)

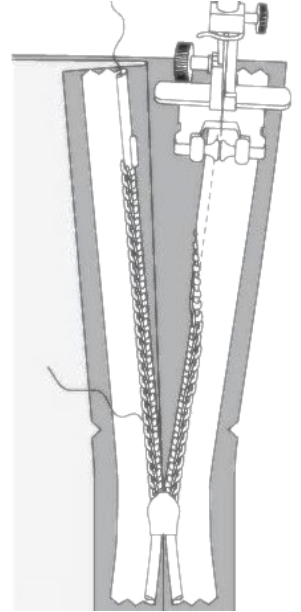
- Repeat for the right side of the zipper. Start stitching at the top and proceed downwards toward the hem. You may need to readjust the position of the needle depending on your zipper foot. (See Figure 2)

- Close the zipper.

- Baste the center back seam, folding away the lower end of the zipper, so that you can baste it up to the stitch line of the zipper.

- Install the zipper foot. Sew the center back seam from the lower edge (or the vent upper corner, if there's a vent) and stitch as closely as you can to the end of the zipper.

- Remove baste stitches. Slipstitch the base of the opening for zipper. Press the seam apart, pressing the opening for the zipper at the same time.



4. Fold strap in half lengthwise, right sides together, and sew long edge. Turn right side out, placing seam on fold, press. Topstitch at 0.2 cm from the edge.

5. Pin the Front to the Back, matching the armhole corner, and the waist level. Sew the side seam. Serge the seam press it towards the Back.

6. INSERTING STRAPS & SEWING FACING ALONG THE TOP EDGE

- Sew side seams of back and front top edge facings. Serge the lower edge of the facing.

- Pin facing onto Shell right sides together, adjusting neckline edges. Insert the front straps according to the markings. Fold the facing away all the way along EXCEPT for the area 5 mm from the edge of dress zipper and pin it to upper edge of garment. Fold seam allowances along zipper onto right side and pin to neckline on top of facings.

- Sew the top edge continuously. Clip into curves, turn pieces right side out and press.

- Put on garment, adjust length of straps, serge lower edges and fasten them to back facing.

- Slipstitch the facing to the seam allowances along the side edges. Slipstitch facing to zipper tape.

TECHNICAL DRAWING:

