

Sewing Pattern #4294644

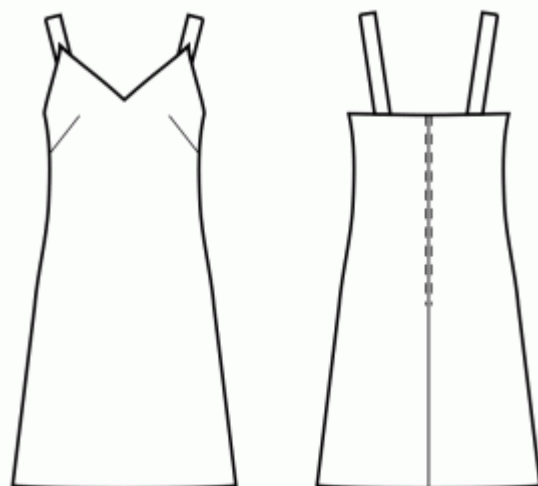
Dress - Bodycon (knit fabrics!) - Below knee length - V decollete - No top decoration - No front closure - A-line dress - Plain skirt - Front French darts - No back darts - Regular Straps

Note on seam allowances:

- If the pattern has double contour the seam allowances are included.
- If the pattern has single contour, the seam allowances are NOT included and need to be added when laying out the pattern.

Note on length of fabric:

Attention! The amount of fabric needed for your pattern is not included. It will depend on the selected pattern size, the width, and design of the fabric you plan to use. You are welcome to use the Online Fabric Estimator to make calculations. Alternatively, print all the paper patterns and lay them out at the width of fabric you plan to use (usually from 90 to 150 cm). Measure how much fabric you will need. Don't forget to account for pieces that need to be cut multiple times and pieces that are cut on the fold.



PRINTING:

Please use Adobe Reader software to open your PDF pattern. You can get Adobe Reader free of charge at this link - <https://get.adobe.com/reader/>.

Make sure you print your patterns at actual size (100%% scale or None) and on single sides of plain A4 paper. Verify that the print out size is to the correct scale by measuring the test square on the first page. The upper edge of the square features a centimeter scale, and the bottom edge features an inch scale.

Trim top and/or right margin of the pages where you see the scissors symbols. In the center of each page, the number of row and column is printed, separated by / sign. Construct layout pages according to these marks (for example, page marked 2/3 is in the second row and in the third column). Align pages using margins and tape or glue together.

CUTTING:

Note on cutting:

Lay out your pieces according to straight of grain as marked on the pattern pieces.

Some pieces will be cut on the fold, the corresponding edge will then be marked with a fold mark. Kindly pay attention to notes regarding type of fabric and quantity of required pieces on a block. For example, [Main, Interfacing - cut 1+1] on a pattern piece means that you need to cut 1 piece as is and 1 mirrored piece from the main fabric as well as from interfacing.

Make sure to mark all notches and other design features such as pleats etc. from the pattern piece onto your fabric. When sewing the garment, pay attention to notches, they must match up.

* The capital letters in brackets correspond to pattern blocks as seen in Online Fabric Estimator and in pattern blocks preview on the right.

INSTRUCTIONS:

1. Recommended fabric for your sewing pattern:

- **Stretch Crepe:** A lightweight woven fabric with a gentle stretch, providing a figure-flattering fit for bodycon dresses while still maintaining limited stretchiness. It allows for sleek lines and tailored details without excessive complexity.
- **Stretch Twill:** Lightweight woven twill fabrics with a touch of stretch, offering both comfort and style for bodycon designs, with limited stretch. It provides structure and elegance to your dress without compromising on the style elements.
- **Lightweight Ponte:** A lighter version of Ponte Roma, still stable and stretchy, perfect for lightweight body-hugging dresses, with limited stretch. It is ideal for creating clean lines and simple yet sophisticated bodycon styles.
- **Stretch Satin:** Lightweight satin with elastane content, providing a slight stretch for a luxurious bodycon look. It adds a touch of elegance to your dress, ensuring a perfect fit for the style elements.
- **Stretch Sateen:** A smooth and lightweight fabric with elastane, offering a subtle stretch for a comfortable fitted bodycon dress. It is versatile and allows you to incorporate intricate style elements with ease.
- **Stretch Jacquard:** Lightweight jacquard fabrics with elastane, adding texture and stretch to your bodycon style. It offers a unique look and allows for creative design elements while maintaining a flattering fit.

When working with fabrics with elastane or limited stretch, it's essential to consider the pattern's style elements to ensure a successful outcome. These lightweight fabrics allow for creating a snug bodycon dress with clean lines and tailored details, providing both comfort and sophistication. As you sew, keep in mind the expertise required to handle stretch fabrics and maintain the dress's overall style elements. Happy fabric shopping and sewing!

2. Preparing the Fabric:

a. Prewash the Fabric:

- Before starting your sewing project, it's essential to prewash the fabric to remove any sizing or shrinkage.
- Follow the fabric's care instructions for washing and drying.

b. Dry and Iron:

- After prewashing, dry the fabric according to the care instructions.
- Once dry, iron the fabric to remove any wrinkles and ensure it's smooth and flat.

c. Check Fabric Edges and Salvage Edge:

- Examine the edges of the fabric piece to ensure they are even and not cut in a slanted line.
- If the fabric is cut at an angle, take this into account when calculating the yardage needed.
- Do not include the salvage edge (the rough edge) into the calculations, as it may affect the look of the garment.

d. Use the Online Yardage Tool at Sewist.com:

- Visit Sewist.com and use the [online yardage tool](#) to estimate the amount of fabric required for your sewing pattern.
- Input the necessary measurements and details to get an accurate yardage estimate.

e. Check Sewing Pattern Instructions:

- Review the sewing pattern instructions to determine the number of fabric pieces to cut and if any of them need to be cut on the fold.
- Take note of any seam allowances on the edge of the fold line. If the seam allowance extends beyond the fold line, ignore it.

f. Language Options:

- If you need the sewing pattern instructions in German, French, Spanish, Italian, or Russian, you can download them from the sewing pattern page at Sewist.com.
- Simply go to the gallery, type in the design number, and proceed to the sewing pattern page.

g. Choose Your Cutting Method:

1. (Option 1)

- Print out the sewing pattern and tape the pages together to create the pattern pieces.
- Place the sewing pattern pieces on the fabric and use weights to keep them from shifting.
- Consider marking the outlines with a water-soluble or heat-erasable marker, transferring all marks and notches, and paying attention to the width of the seam allowances.

2. (Option 2)

- If you have an iPhone, you can use the augmented reality sewing pattern with the VectAR app.
- Download the app and print out the marker page, then follow the manual at [Sewist.com - VectAR Manual](#) to use the AR sewing pattern.

3. Apply fusible interfacing according to the Cutting instructions. Lay out your main fabric on the ironing board with the wrong side of the fabric up. Place the interfacing on top with the adhesive facing down. Place a pressing cloth over the top. Apply fusible interfacing in stages, covering a certain area at a time. Hold the iron over the fabric for about 10 seconds. Keep the iron still so that the fabric layers don't move around. Lift the iron and proceed to the next area. Leave it to cool a little before moving onto the next stage.

4. Sew darts on Front pieces. Start from the edge of the fabric, and stitch towards the dart corner, using a narrow stitch. Do not backstitch, leave long threads and tie a knot. Cut bulk off of 1 cm, if desired, and serge the raw edge. Press towards top.

5. CENTER BACK ZIPPER

- Fold under the seam allowances along the center back seam. Push them down with your hand, but do not press them.

- Open the dress zipper. Put it down onto the center back edge, right sides together. The teeth of the zipper should be matched with the center back of the garment. The edge of the zipper tape is directed towards the edge of the seam allowance.

- Line up the upper end of the zipper 1mm lower than the marked stitch line of the neckline edge (not the edge of the seam allowance of the neckline) and baste the zipper tape to the seam allowance of center back. Do not baste through both layers of the main fabric, but to the seam allowance only. It is best to baste with slanted stitches at the center of the zipper tape. Baste both the left and the right sides of the zipper, from the upper edge downwards.

- Install the invisible zipper foot.

- Push down the teeth of the left side of the zipper with the nail of your index finger, and thread them into the special groove of the zipper foot. Make sure to uncurl the spiral of the zipper with your nail a bit, so that you can see the future stitch line. Adjust the position of the needle and stitch the zipper close to teeth. Make sure that the stitch line is exactly at the center back line. Stop at 2 cm from the slider. Leave long ends, pull them to the wrong side, tie a knot and cut thread. (See Figure 1)

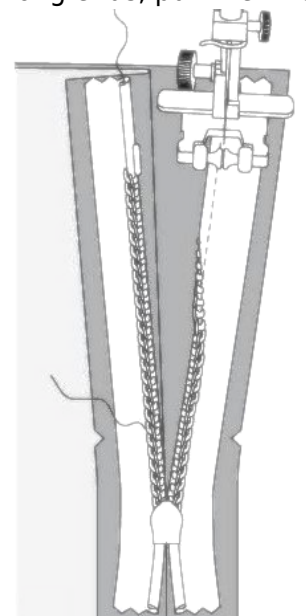
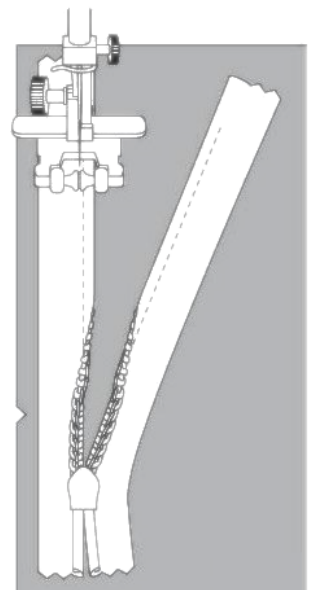
- Repeat for the right side of the zipper. Start stitching at the top and proceed downwards toward the hem. You may need to readjust the position of the needle depending on your zipper foot. (See Figure 2)

- Close the zipper.

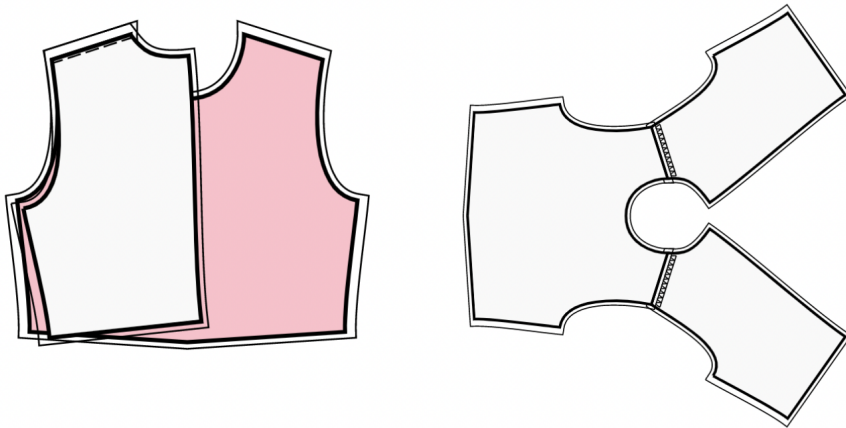
- Baste the center back seam, folding away the lower end of the zipper, so that you can baste it up to the stitch line of the zipper.

- Install the zipper foot. Sew the center back seam from the lower edge (or the vent upper corner, if there's a vent) and stitch as closely as you can to the end of the zipper.

- Remove baste stitches. Slipstitch the base of the opening for zipper. Press the seam apart, pressing the opening for the zipper at the same time.



6. Sew shoulder seams. Serge and press towards back.



7. Pin the Front to the Back, matching the armhole corner, and the waist level. Sew the side seam. Serge the seam press it towards the Back.

8. INSERTING STRAPS & SEWING FACING ALONG THE TOP EDGE

- Sew side seams of back and front top edge facings. Serge the lower edge of the facing.
- Pin facing onto Shell right sides together, adjusting neckline edges. Insert the front straps according to the markings. Fold the facing away all the way along EXCEPT for the area 5 mm from the edge of dress zipper and pin it to upper edge of garment. Fold seam allowances along zipper onto right side and pin to neckline on top of facings.
- Sew the top edge continuously. Clip into curves, turn pieces right side out and press.
- Put on garment, adjust length of straps, serge lower edges and fasten them to back facing.
- Slipstitch the facing to the seam allowances along the side edges. Slipstitch facing to zipper tape.

9. HEM FINISHING

- a. **Serge Hem** Using a serger or overlock machine, serge the raw edge of the hem to prevent fraying.
- b. **Turn Under and Press:** Turn the serged edge of the hem towards the wrong side of the fabric. Press the folded hem in place with an iron to create a crisp edge.
- c. **Topstitch or Slip Stitch:** Choose your desired finishing method:
 - **Topstitch:** Sew a straight stitch along the folded edge of the hem, securing it in place.
 - **Slip Stitch:** Use a hand sewing needle and matching thread to invisibly stitch the folded hem to the main fabric.

TECHNICAL DRAWING:

